



# Transformer

—  
by ABB



\*1M000000\*

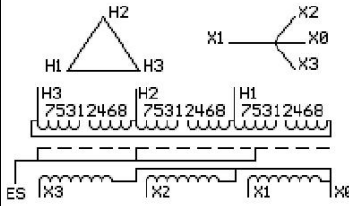
**Catalog Number**      **Type QL**  
**9T12C1005G03**

112.5 KVA    60 HZ    3 PH    3.4 % IMP  
40 C AMB.    150 C RISE    220 C SYSTEM    IS-19C

Note: Design is based on 150.0KVA & 150C Rise 4.4% Imp.

PRIMARY (H)      480 VOLTS (LINE-LINE)  
SECONDARY (X)    208 VOLTS (LINE-LINE)  
                                 120 VOLTS (LINE-NEUTRAL)

JUMPER CONNECTION	
TAP	VOLTS
1-2	506
2-3	493
3-4	480
4-5	468
5-6	455
6-7	442
7-8	430

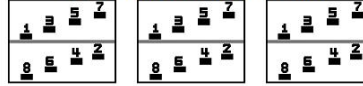


NET WGT    INSPECTION & FINAL TEST  
1085 LB    TEST  
492.2 Kg    NOG  
89512    N139!  
DY76C    092021



LISTED 769G

### COIL TAP ARRANGEMENT



ELECTROSTATIC GROUND SHIELD IN EACH PHASE

ENCLOSURE TYPE 2 (IP20). OR RAINFOOF TYPE 3R (IP22) WHEN PROVIDED SHIELD 9T18Y1076G06

SUITABLE FOR NONSINUSOIDAL CURRENT LOAD WITH K-FACTOR NOT TO EXCEED 20

BEFORE HANDLING, INSTALLING AND OPERATING, SEE INSTRUCTION 475A667AAP001

COPPER CONDUCTOR      PRIMARY: 10 KV BIL      SECONDARY: 10 KV BIL

IN ACCORDANCE WITH NEC SECTION 450-9, ALLOW AT LEAST SIX INCHES CLEARANCE FOR VENTILATION.

CHECK ADDITIONAL NEC AND LOCAL CODE

ASSEMBLED IN MEXICO

X3 - X2 - X1 - -  
- H3 - H2 - H1

Note: X0 at the bottom

Outline: 303B111GEDYP76C

NEMA CLASS AA DRY TYPE TRANSFORMER

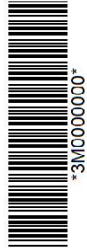
Meets DOE 2016 efficiency

X3 - X2 - X1 - -  
- H3 - H2 - H1

X3 - X2 - X1 - -  
- H3 - H2 - H1



\*2M000000\*



\*3M000000\*

X0