



Transformer

by ABB



1M0000000

Catalog Number
9T14A1003G03

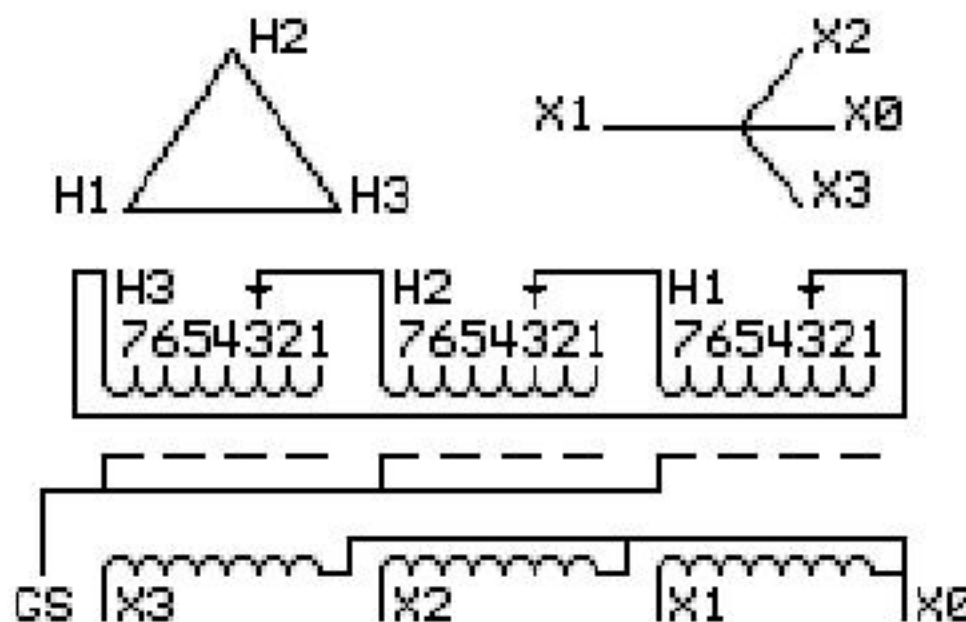
Type QL

45.0 KVA **60 HZ** **3 PH** **3.1 % IMP**
40 C AMB. **150 C RISE** **220 C SYSTEM** **IS-19C**

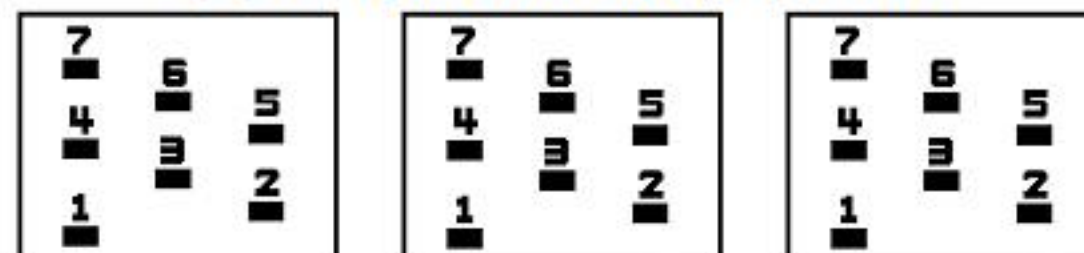
Note: Design is based on 45.00KVA & 115C Rise 3.1% Imp.

PRIMARY (H) **480 VOLTS (LINE-LINE)**
SECONDARY (X) **208 VOLTS (LINE-LINE)**
 120 VOLTS (LINE-NEUTRAL)

JUMPER CONNECTION TAP VOLTS	
1	504
2	490
3	480
4	467
5	457
6	444
7	434



COIL TAP ARRANGEMENT



NET WGT	INSPECTION & FINAL TEST
444 LB	
201.4 Kg	
88971	NOG
UX73A	N137!
	091021



ELECTROSTATIC GROUND SHIELD IN EACH PHASE

ENCLOSURE TYPE 2 (IP20). OR RAINPROOF TYPE 3R (IP22) WHEN PROVIDED SHIELD 9T18Y1072G06

SUITABLE FOR NONSINUSOIDAL CURRENT LOAD WITH K-FACTOR NOT TO EXCEED 4

BEFORE HANDLING, INSTALLING AND OPERATING, SEE INSTRUCTION 475A667AAP001

ALUMINUM CONDUCTOR PRIMARY: 10 KV BIL SECONDARY: 10 KV BIL

IN ACCORDANCE WITH NEC SECTION 450-9, ALLOW AT LEAST SIX INCHES CLEARANCE FOR VENTILATION.

CHECK ADDITIONAL NEC AND LOCAL CODE

ASSEMBLED IN MEXICO

X3 H3 X2 H2 X1 H1 X0

- - - - - -

Note: standard

Outline: 303B111GEUXP73A

NEMA CLASS AA DRY TYPE TRANSFORMER

Meets DOE 2016 efficiency