



# Transformer

—  
by ABB



\*1M000000\*

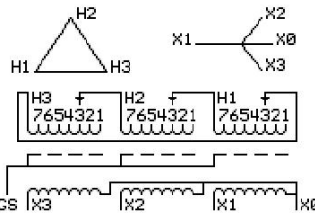
**Catalog Number** Type QL  
**9T14A1003G04**

45.0 KVA 60 HZ 3 PH 3.3 % IMP  
40 C AMB. 150 C RISE 220 C SYSTEM IS-19C

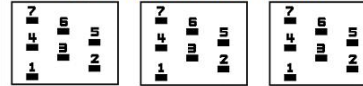
*Note: Design is based on 45.00KVA & 150C Rise 3.3% Imp.*

PRIMARY (H) 480 VOLTS (LINE-LINE)  
SECONDARY (X) 208 VOLTS (LINE-LINE)  
120 VOLTS (LINE-NEUTRAL)

JUMPER CONNECTION	TAP VOLTS
1	504
2	490
3	480
4	467
5	457
6	444
7	434



### COIL TAP ARRANGEMENT



NET WGT 444 LB  
444 LB  
201.4 Kg  
88969  
UX73A

INSPECTION & FINAL TEST  
NOG  
N137!  
091021



LISTED 769G

ELECTROSTATIC GROUND SHIELD IN EACH PHASE

ENCLOSURE TYPE 2 (IP20). OR RAINPROOF TYPE 3R (IP22) WHEN PROVIDED SHIELD 9T18Y1072G06  
SUITABLE FOR NONSINUSOIDAL CURRENT LOAD WITH K-FACTOR NOT TO EXCEED 4

BEFORE HANDLING, INSTALLING AND OPERATING, SEE INSTRUCTION 475A667AAP001  
ALUMINUM CONDUCTOR PRIMARY: 10 KV BIL SECONDARY: 10 KV BIL  
IN ACCORDANCE WITH NEC SECTION 450-9, ALLOW AT LEAST SIX INCHES CLEARANCE FOR VENTILATION.  
CHECK ADDITIONAL NEC AND LOCAL CODE

ASSEMBLED IN MEXICO

X3 H3 X2 H2 X1 H1 X0

Note: standard

Outline: 303B111GEUXP73A

NEMA CLASS AA DRY TYPE TRANSFORMER

Meets DOE 2016 efficiency

X0  
X1 H1  
X2 H2  
X3 H3



\*2M000000\*



\*3M000000\*