



Transformer

—
by ABB



1M000000

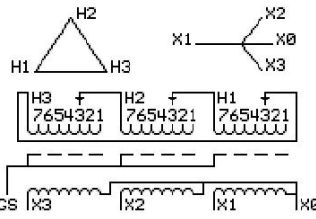
Catalog Number **Type QL**
9T14A1003G06

45.0 KVA 60 HZ 3 PH 3.3 % IMP
40 C AMB. 150 C RISE 220 C SYSTEM IS-19C

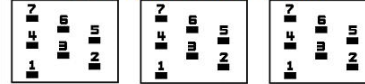
Note: Design is based on 45.00KVA & 150C Rise 3.3% Imp.

PRIMARY (H) 480 VOLTS (LINE-LINE)
SECONDARY (X) 208 VOLTS (LINE-LINE)
 120 VOLTS (LINE-NEUTRAL)

JUMPER CONNECTION	TAP VOLTS
1	504
2	490
3	480
4	467
5	457
6	444
7	434



COIL TAP ARRANGEMENT



NET WGT	INSPECTION & FINAL TEST
444 LB	TEST
201.4 Kg	NOG
88969	N137!
UX73A	091021



ELECTROSTATIC GROUND SHIELD IN EACH PHASE

ENCLOSURE TYPE 2 (IP20). OR RAINPROOF TYPE 3R (IP22) WHEN PROVIDED SHIELD 9T18Y1072G06
SUITABLE FOR NONSINUSOIDAL CURRENT LOAD WITH K-FACTOR NOT TO EXCEED 4

BEFORE HANDLING, INSTALLING AND OPERATING, SEE INSTRUCTION 475A667AAP001
ALUMINUM CONDUCTOR PRIMARY: 10 KV BIL SECONDARY: 10 KV BIL
IN ACCORDANCE WITH NEC SECTION 450-9, ALLOW AT LEAST SIX INCHES CLEARANCE FOR VENTILATION.
CHECK ADDITIONAL NEC AND LOCAL CODE

ASSEMBLED IN MEXICO

X3 H3 X2 H2 X1 H1 X0

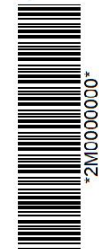
Note: standard

Outline: 303B111GEUXP73A

NEMA CLASS AA DRY TYPE TRANSFORMER

Meets DOE 2016 efficiency

X0	-	-	-	-	-	-	-
X1	-	-	-	-	-	-	-
H1	-	-	-	-	-	-	-
X2	-	-	-	-	-	-	-
H2	-	-	-	-	-	-	-
X3	-	-	-	-	-	-	-
H3	-	-	-	-	-	-	-
X0	-	-	-	-	-	-	-



2M000000



3M000000