



Transformer

—
by ABB



1M000000

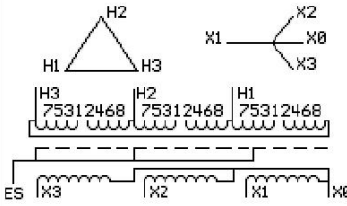
Catalog Number **Type QL**
9T14A1005G63

112.5 KVA **60 HZ** **3 PH** **2.9 % IMP**
40 C AMB. **80 C RISE** **220 C SYSTEM** **IS-19C**

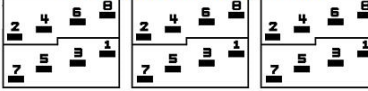
Note: Design is based on 150.0KVA & 115C Rise 3.9% Imp.

PRIMARY (H) **480 VOLTS (LINE-LINE)**
SECONDARY (X) **208 VOLTS (LINE-LINE)**
 120 VOLTS (LINE-NEUTRAL)

JUMPER CONNECTION	
TAP	VOLTS
1-2	506
2-3	491
3-4	480
4-5	470
5-6	454
6-7	444
7-8	433



COIL TAP ARRANGEMENT



ELECTROSTATIC GROUND SHIELD IN EACH PHASE

NET WGT **INSPECTION & FINAL TEST**
1250 LB **567.0 Kg**
89065 **NOG**
DX76A **N137!**
 091021



ENCLOSURE TYPE 2 (IP20). OR RAINPROOF TYPE 3R (IP22) WHEN PROVIDED SHIELD 9T18Y107G06
SUITABLE FOR NONSINUSOIDAL CURRENT LOAD WITH K-FACTOR NOT TO EXCEED 4

BEFORE HANDLING, INSTALLING AND OPERATING, SEE INSTRUCTION 475A667AAP009
ALUMINUM CONDUCTOR PRIMARY: 10 KV BIL SECONDARY: 10 KV BIL
IN ACCORDANCE WITH NEC SECTION 450-9, ALLOW AT LEAST SIX INCHES CLEARANCE FOR VENTILATION.
CHECK ADDITIONAL NEC AND LOCAL CODE

ASSEMBLED IN MEXICO

Note:

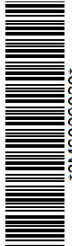
Outline: 303B112GEDXP76A

NEMA CLASS AA DRY TYPE TRANSFORMER

Meets DOE 2016 efficiency



2M000000



3M000000