



# Transformer

—  
by ABB



\*1M000000\*

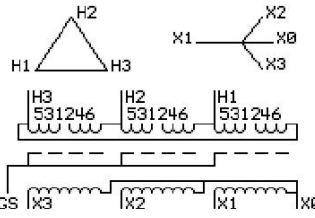
**Catalog Number**      **Type QL**  
**9T14A1009G03**

500.0 KVA    60 HZ    3 PH    2.3 % IMP  
40 C AMB.    150 C RISE    220 C SYSTEM    IS-19C

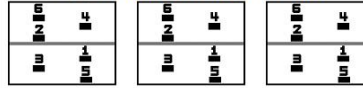
PRIMARY (H)    480 VOLTS (LINE-LINE)  
SECONDARY (X)    208 VOLTS (LINE-LINE)  
   120 VOLTS (LINE-NEUTRAL)

**JUMPER CONNECTION**

TAP	VOLTS
1-2	500
2-3	490
3-4	480
4-5	470
5-6	460



**COIL TAP ARRANGEMENT**



**NET WGT**      **INSPECTION & FINAL TEST**  
2900 LB  
1315.4 Kg  
90034      **NOG**  
DX79A      N137!  
   091021



ELECTROSTATIC GROUND SHIELD IN EACH PHASE

ENCLOSURE TYPE 2 (IP20). OR RAINPROOF TYPE 3R (IP22) WHEN PROVIDED SHIELD 9T18Y1079G06

ASSEMBLED IN MEXICO

**BEFORE HANDLING, INSTALLING AND OPERATING, SEE INSTRUCTION 475A667AAP009**  
ALUMINUM CONDUCTOR    PRIMARY: 10 KV BIL    SECONDARY: 10 KV BIL  
IN ACCORDANCE WITH NEC SECTION 450-9, ALLOW AT LEAST SIX INCHES CLEARANCE FOR VENTILATION.  
**CHECK ADDITIONAL NEC AND LOCAL CODE**

Note:

Outline: 303B112GEDXP79A

NEMA CLASS AA DRY TYPE TRANSFORMER

Meets DOE 2016 efficiency



\*2M000000\*



\*3M000000\*