



# Transformer

by ABB



\*1M000000\*

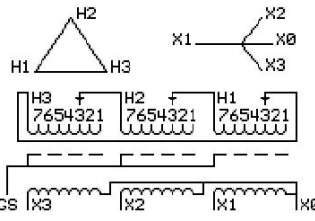
**Catalog Number**      **Type QL**  
**9T14A1023G03**

**45.0 KVA    60 HZ    3 PH    3.5 % IMP**  
**40 C AMB.    150 C RISE    220 C SYSTEM    IS-19C**

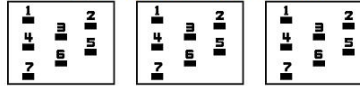
*Note: Design is based on 45.00KVA & 150C Rise 3.5% Imp.*

**PRIMARY (H)    480 VOLTS (LINE-LINE)**  
**SECONDARY (X)    220 VOLTS (LINE-LINE)**  
**127 VOLTS (LINE-NEUTRAL)**

JUMPER CONNECTION	TAP VOLTS
1	505
2	492
3	480
4	469
5	456
6	443
7	433



### COIL TAP ARRANGEMENT



<b>NET WGT</b>	<b>INSPECTION &amp; FINAL TEST</b>
444 LB	
201.4 Kg	<b>NOG</b>
88729	<b>N137!</b>
UX73A	<b>091021</b>



LISTED 769G

ELECTROSTATIC GROUND SHIELD IN EACH PHASE

ENCLOSURE TYPE 2 (IP20). OR RAINPROOF TYPE 3R (IP22) WHEN PROVIDED SHIELD 9T18Y1072G06

**SUITABLE FOR NONSINUSOIDAL CURRENT LOAD WITH K-FACTOR NOT TO EXCEED 4**

**BEFORE HANDLING, INSTALLING AND OPERATING, SEE INSTRUCTION 475A667AAP001**

ALUMINUM CONDUCTOR    PRIMARY: 10 KV BIL    SECONDARY: 10 KV BIL

IN ACCORDANCE WITH NEC SECTION 450-9, ALLOW AT LEAST SIX INCHES CLEARANCE FOR VENTILATION.

CHECK ADDITIONAL NEC AND LOCAL CODE

**ASSEMBLED IN MEXICO**

**X3   H3   X2   H2   X1   H1   X0**

Note: **standard**

Outline: 303B111GEUXP73A

NEMA CLASS AA DRY TYPE TRANSFORMER

Meets DOE 2016 efficiency

X0	-	-	-	-	-	-	-
X1	-	-	-	-	-	-	-
H1	-	-	-	-	-	-	-
X2	-	-	-	-	-	-	-
H2	-	-	-	-	-	-	-
X3	-	-	-	-	-	-	-
H3	-	-	-	-	-	-	-



\*2M000000\*



\*3M000000\*