



# Transformer

—  
by ABB



\*1M000000\*

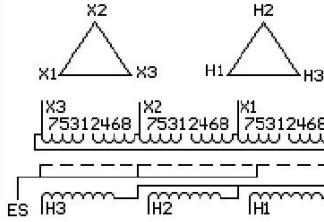
**Catalog Number**      **Type QL**

**9T14A1337G03**

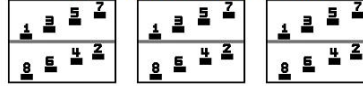
225.0 KVA    60 HZ    3 PH    4.4 % IMP  
40 C AMB.    150 C RISE    220 C SYSTEM    IS-19C

PRIMARY (X)      208 VOLTS (LINE-LINE)  
SECONDARY (H)    480 VOLTS (LINE-LINE)

JUMPER CONNECTION	
TAP	VOLTS
1-2	221
2-3	215
3-4	208
4-5	202
5-6	196
6-7	189
7-8	183



**COIL TAP ARRANGEMENT**



<b>NET WGT</b> 1670 LB 757.5 Kg	<b>INSPECTION &amp; FINAL TEST</b> NOG N139! 092021
90042 DY78A	



ELECTROSTATIC GROUND SHIELD IN EACH PHASE

ENCLOSURE TYPE 2 (IP20). OR RAINPROOF TYPE 3R (IP22) WHEN PROVIDED SHIELD 9T18Y1077G06

SUITABLE FOR NONSINUSOIDAL CURRENT LOAD WITH K-FACTOR NOT TO EXCEED 4

BEFORE HANDLING, INSTALLING AND OPERATING, SEE INSTRUCTION 475A667AAP009

ALUMINUM CONDUCTOR    PRIMARY: 10 KV BIL    SECONDARY: 10 KV BIL

IN ACCORDANCE WITH NEC SECTION 450-9, ALLOW AT LEAST SIX INCHES CLEARANCE FOR VENTILATION.

CHECK ADDITIONAL NEC AND LOCAL CODE

ASSEMBLED IN MEXICO

Note:

Outline: 303B112GEDYP78A

NEMA CLASS AA DRY TYPE TRANSFORMER

Meets DOE 2016 efficiency



\*2M000000\*



\*3M000000\*