



# Transformer

—  
by ABB



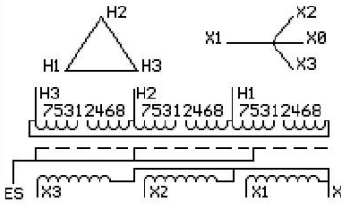
**Catalog Number**      **Type** **QL**

**9T14A1454G04**

75.0 KVA    60 HZ    3 PH    3.1 % IMP  
40 C AMB.    150 C RISE    220 C SYSTEM    IS-19C

Note: Design is based on 75.00KVA & 150C Rise 3.1% Imp.

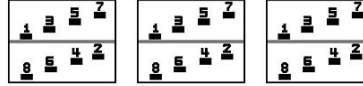
JUMPER CONNECTION	
TAP	VOLTS
1-2	218
2-3	213
3-4	208
4-5	205
5-6	196
6-7	191
7-8	187



PRIMARY (H)    208 VOLTS (LINE-LINE)  
SECONDARY (X)    208 VOLTS (LINE-LINE)  
                                 120 VOLTS (LINE-NEUTRAL)

ELECTROSTATIC GROUND SHIELD IN EACH PHASE

**COIL TAP ARRANGEMENT**



NET WGT    INSPECTION & FINAL TEST  
680 LB    TEST  
308.4 Kg    NOG  
89316    N137!  
DY75A    091021



ENCLOSURE TYPE 2 (IP20). OR RAINPROOF TYPE 3R (IP22) WHEN PROVIDED SHIELD 9T18Y1074G06

SUITABLE FOR NONSINUSOIDAL CURRENT LOAD WITH K-FACTOR NOT TO EXCEED 4

BEFORE HANDLING, INSTALLING AND OPERATING, SEE INSTRUCTION 475A667AAP001

ALUMINUM CONDUCTOR    PRIMARY: 10 KV BIL    SECONDARY: 10 KV BIL

IN ACCORDANCE WITH NEC SECTION 450-9, ALLOW AT LEAST SIX INCHES CLEARANCE FOR VENTILATION.

CHECK ADDITIONAL NEC AND LOCAL CODE

NEMA CLASS AA DRY TYPE TRANSFORMER

Meets DOE 2016 efficiency

**ASSEMBLED IN MEXICO**

X3 - X2 - X1 - -  
- H3 - H2 - H1

Note: X0 at the bottom

Outline: 303B111GEDYP75A

X0

X3 - X2 - X1 - - H1

X3 - X2 - X1 - - H1

X3 - X2 - X1 - - H1

X3 - H3 - H2 - H1

X3 - X2 - X1 - - H1

X3 - H3 - H2 - H1

X0