



# Transformer

by ABB



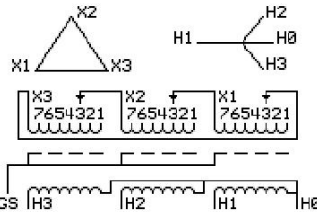
\*1M000000\*

**Catalog Number** 9T14A1583G03 **Type** QL

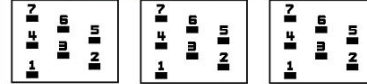
45.0 KVA 60 HZ 3 PH 3.4 % IMP  
40 C AMB. 150 C RISE 220 C SYSTEM IS-19C

PRIMARY (X) 240 VOLTS (LINE-LINE)  
SECONDARY (H) 460 VOLTS (LINE-LINE)  
266 VOLTS (LINE-NEUTRAL)

JUMPER CONNECTION TAP	VOLTS
1	253
2	246
3	240
4	233
5	227
6	223
7	217



### COIL TAP ARRANGEMENT



**NET WGT** 444 LB  
**INSPECTION & FINAL TEST** 201.4 Kg  
**NOG** 88951  
**UX73A** N137!  
 091021



ELECTROSTATIC GROUND SHIELD IN EACH PHASE

ENCLOSURE TYPE 2 (IP20). OR RAINPROOF TYPE 3R (IP22) WHEN PROVIDED SHIELD 9T18Y1072G06  
SUITABLE FOR NONSINUSOIDAL CURRENT LOAD WITH K-FACTOR NOT TO EXCEED 4

BEFORE HANDLING, INSTALLING AND OPERATING, SEE INSTRUCTION 475A667AAP001  
ALUMINUM CONDUCTOR PRIMARY: 10 KV BIL SECONDARY: 10 KV BIL  
IN ACCORDANCE WITH NEC SECTION 450-9, ALLOW AT LEAST SIX INCHES CLEARANCE FOR VENTILATION.  
CHECK ADDITIONAL NEC AND LOCAL CODE

ASSEMBLED IN MEXICO

H3 X3 H2 X2 H1 X1 H0

Note: standard

Outline: 303B111GEUXP73A

NEMA CLASS AA DRY TYPE TRANSFORMER

Meets DOE 2016 efficiency

H3 X3 H2 X2 H1 X1 H0

H3 X3 H2 X2 H1 X1 H0

H3 X3 H2 X2 H1 X1 H0

\*2M000000\*

\*3M000000\*