



Transformer

by ABB



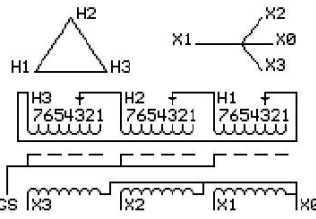
1M000000

Catalog Number 9T14A1612G33 **Type** QL

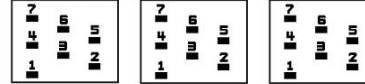
30.0 KVA 60 HZ 3 PH 2.5 % IMP
40 C AMB. 115 C RISE 220 C SYSTEM IS-19C

PRIMARY (H) 240 VOLTS (LINE-LINE)
SECONDARY (X) 208 VOLTS (LINE-LINE)
120 VOLTS (LINE-NEUTRAL)

JUMPER CONNECTION TAP	VOLTS
1	253
2	246
3	240
4	234
5	228
6	221
7	215



COIL TAP ARRANGEMENT



NET WGT 444 LB
444 LB
201.4 Kg
88952
UX73A

INSPECTION & FINAL TEST
NOG
N137!
091021



LISTED 769G

ELECTROSTATIC GROUND SHIELD IN EACH PHASE

ENCLOSURE TYPE 2 (IP20). OR RAINPROOF TYPE 3R (IP22) WHEN PROVIDED SHIELD 9T18Y1072G06

SUITABLE FOR NONSINUSOIDAL CURRENT LOAD WITH K-FACTOR NOT TO EXCEED 4

BEFORE HANDLING, INSTALLING AND OPERATING, SEE INSTRUCTION 475A667AAP001

ALUMINUM CONDUCTOR PRIMARY: 10 KV BIL SECONDARY: 10 KV BIL

IN ACCORDANCE WITH NEC SECTION 450-9, ALLOW AT LEAST SIX INCHES CLEARANCE FOR VENTILATION.

CHECK ADDITIONAL NEC AND LOCAL CODE

ASSEMBLED IN MEXICO

X3 H3 X2 H2 X1 H1 X0

Note: standard

Outline: 303B111GEUXP73A

NEMA CLASS AA DRY TYPE TRANSFORMER

Meets DOE 2016 efficiency

X0
X1 H1
X2 H2
X3 H3



2M000000



3M000000