



# Transformer

by ABB



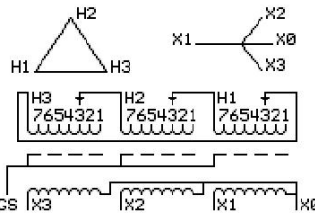
\*1M000000\*

**Catalog Number** 9T14A1614G03 **Type** QL

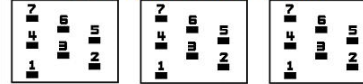
75.0 KVA 60 HZ 3 PH 6.2 % IMP  
40 C AMB. 150 C RISE 220 C SYSTEM IS-19C

PRIMARY (H) 240 VOLTS (LINE-LINE)  
SECONDARY (X) 208 VOLTS (LINE-LINE)  
120 VOLTS (LINE-NEUTRAL)

JUMPER CONNECTION TAP	VOLTS
1	251
2	247
3	240
4	233
5	229
6	222
7	215



### COIL TAP ARRANGEMENT



**NET WGT**  
603 LB  
273.5 Kg  
90049  
UX74A

**INSPECTION & FINAL TEST**  
NOG  
N139!  
092021



ELECTROSTATIC GROUND SHIELD IN EACH PHASE

ENCLOSURE TYPE 2 (IP20). OR RAINPROOF TYPE 3R (IP22) WHEN PROVIDED SHIELD 9T18Y1074G06  
SUITABLE FOR NONSINUSOIDAL CURRENT LOAD WITH K-FACTOR NOT TO EXCEED 4

BEFORE HANDLING, INSTALLING AND OPERATING, SEE INSTRUCTION 475A667AAP001  
ALUMINUM CONDUCTOR PRIMARY: 10 KV BIL SECONDARY: 10 KV BIL  
IN ACCORDANCE WITH NEC SECTION 450-9, ALLOW AT LEAST SIX INCHES CLEARANCE FOR VENTILATION.  
CHECK ADDITIONAL NEC AND LOCAL CODE

ASSEMBLED IN MEXICO

X3 H3 X2 H2 X1 H1

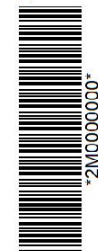
Note: X0 at the bottom

Outline: 303B111GEUXP74A

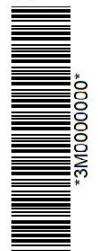
NEMA CLASS AA DRY TYPE TRANSFORMER

Meets DOE 2016 efficiency

X3 H3 X2 H2 X1 H1  
X3 H3 X2 H2 X1 H1  
X3 H3 X2 H2 X1 H1



\*2M000000\*



\*3M000000\*

X0