



Transformer

by ABB



1M000000

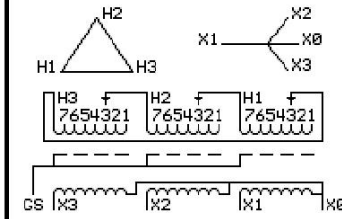
Catalog Number **Type** **QL**
9T14C1001G63

15.0 KVA **60 HZ** **3 PH** **1.6 % IMP**
40 C AMB. **80 C RISE** **220 C SYSTEM** **IS-19C**

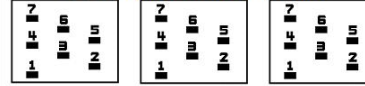
Note: Design is based on 15.00KVA & 80C Rise 1.6% Imp.

PRIMARY (H) **480 VOLTS (LINE-LINE)**
SECONDARY (X) **208 VOLTS (LINE-LINE)**
 120 VOLTS (LINE-NEUTRAL)

JUMPER CONNECTION	TAP VOLTS
1	503
2	493
3	480
4	468
5	455
6	443
7	433



COIL TAP ARRANGEMENT



NET WGT	INSPECTION & FINAL TEST
353 LB	
160.1 Kg	NOG
89927	N139!
UX72C	092021



ELECTROSTATIC GROUND SHIELD IN EACH PHASE

ENCLOSURE TYPE 2 (IP20). OR RAINPROOF TYPE 3R (IP22) WHEN PROVIDED SHIELD 9T18Y1072G06

SUITABLE FOR NONSINUSOIDAL CURRENT LOAD WITH K-FACTOR NOT TO EXCEED 4

BEFORE HANDLING, INSTALLING AND OPERATING, SEE INSTRUCTION 475A667AAP001

COPPER CONDUCTOR PRIMARY: 10 KV BIL SECONDARY: 10 KV BIL

IN ACCORDANCE WITH NEC SECTION 450-9, ALLOW AT LEAST SIX INCHES CLEARANCE FOR VENTILATION.

CHECK ADDITIONAL NEC AND LOCAL CODE

NEMA CLASS AA DRY TYPE TRANSFORMER

Meets DOE 2016 efficiency

ASSEMBLED IN MEXICO

X3 H3 X2 H2 X1 H1 X0

Note: standard

Outline: 303B111GEUXP72C

X0	-	-	-	-	-	-	-	-	-	-
X1	-	-	-	-	-	-	-	-	-	-
H1	-	-	-	-	-	-	-	-	-	-
X2	-	-	-	-	-	-	-	-	-	-
H2	-	-	-	-	-	-	-	-	-	-
X3	-	-	-	-	-	-	-	-	-	-
H3	-	-	-	-	-	-	-	-	-	-
X0	-	-	-	-	-	-	-	-	-	-
X1	-	-	-	-	-	-	-	-	-	-
H1	-	-	-	-	-	-	-	-	-	-
X2	-	-	-	-	-	-	-	-	-	-
H2	-	-	-	-	-	-	-	-	-	-
X3	-	-	-	-	-	-	-	-	-	-
H3	-	-	-	-	-	-	-	-	-	-
X0	-	-	-	-	-	-	-	-	-	-



2M000000



3M000000