



# Transformer

by ABB



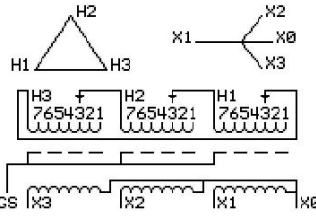
\*1M000000\*

**Catalog Number**      **Type QL**  
**9T14C1002G06**

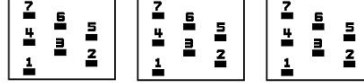
**30.0 KVA    60 HZ    3 PH    4 % IMP**  
**40 C AMB.    150 C RISE    220 C SYSTEM    IS-19C**

**PRIMARY (H)    480 VOLTS (LINE-LINE)**  
**SECONDARY (X)    208 VOLTS (LINE-LINE)**  
**120 VOLTS (LINE-NEUTRAL)**

JUMPER CONNECTION	TAP VOLTS
1	503
2	493
3	480
4	468
5	455
6	445
7	432



### COIL TAP ARRANGEMENT



**NET WGT**  
353 LB  
160.1 Kg  
90061  
UX72C

**INSPECTION & FINAL TEST**  
NOG  
N139!  
092021



LISTED 769G

ELECTROSTATIC GROUND SHIELD IN EACH PHASE

ENCLOSURE TYPE 2 (IP20). OR RAINPROOF TYPE 3R (IP22) WHEN PROVIDED SHIELD 9T18Y1072G06  
SUITABLE FOR NONSINUSOIDAL CURRENT LOAD WITH K-FACTOR NOT TO EXCEED 4

BEFORE HANDLING, INSTALLING AND OPERATING, SEE INSTRUCTION 475A667AAP001  
COPPER CONDUCTOR      PRIMARY: 10 KV BIL      SECONDARY: 10 KV BIL  
IN ACCORDANCE WITH NEC SECTION 450-9, ALLOW AT LEAST SIX INCHES CLEARANCE FOR VENTILATION.  
CHECK ADDITIONAL NEC AND LOCAL CODE

### ASSEMBLED IN MEXICO

**X3    H3    X2    H2    X1    H1    X0**

Note: **standard**

Outline: 303B111GEUXP72C

NEMA CLASS AA DRY TYPE TRANSFORMER

Meets DOE 2016 efficiency

X0  
X1  
H1  
H2  
X2  
H3  
X3

X0  
X1  
H1  
H2  
X2  
H3  
X3



\*2M000000\*



\*3M000000\*