



Transformer

—
by ABB



1M000000

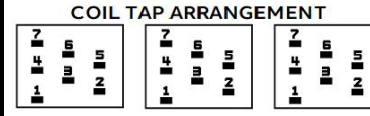
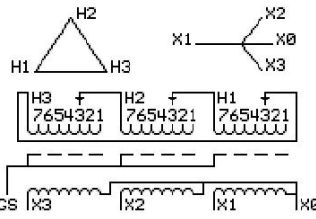
Catalog Number **Type QL**
9T14C1003G04

45.0 KVA 60 HZ 3 PH 3.4 % IMP
40 C AMB. 150 C RISE 220 C SYSTEM IS-19C

Note: Design is based on 45.00KVA & 150C Rise 3.4% Imp.

PRIMARY (H) 480 VOLTS (LINE-LINE)
SECONDARY (X) 208 VOLTS (LINE-LINE)
 120 VOLTS (LINE-NEUTRAL)

JUMPER CONNECTION	TAP VOLTS
1	502
2	491
3	480
4	469
5	455
6	444
7	433



NET WGT
480 LB
217.7 Kg
88850
UX73C

INSPECTION & FINAL TEST
NOG
N137!
091021



ELECTROSTATIC GROUND SHIELD IN EACH PHASE

ENCLOSURE TYPE 2 (IP20). OR RAINPROOF TYPE 3R (IP22) WHEN PROVIDED SHIELD 9T18Y1072G06
 SUITABLE FOR NONSINUSOIDAL CURRENT LOAD WITH K-FACTOR NOT TO EXCEED 4
 BEFORE HANDLING, INSTALLING AND OPERATING, SEE INSTRUCTION 475A667AAP001
 COPPER CONDUCTOR PRIMARY: 10 KV BIL SECONDARY: 10 KV BIL
 IN ACCORDANCE WITH NEC SECTION 450-9, ALLOW AT LEAST SIX INCHES CLEARANCE FOR VENTILATION.
 CHECK ADDITIONAL NEC AND LOCAL CODE

ASSEMBLED IN MEXICO

X3 H3 X2 H2 X1 H1 -

Note: X0 at the top

Outline: 303B111GEUXP73C

NEMA CLASS AA DRY TYPE TRANSFORMER

Meets DOE 2016 efficiency

	-	X3	H3	X2	H2	X1	H1	
	-	X3	H3	X2	H2	X1	H1	X0

2M000000

3M000000