



# Transformer

by ABB



\*1M000000\*

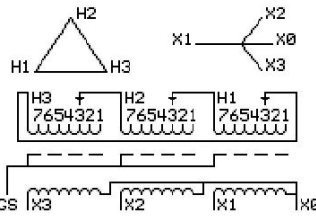
**Catalog Number**      **Type QL**  
**9T14C1003G06**

45.0 KVA    60 HZ    3 PH    3.4 % IMP  
40 C AMB.    150 C RISE    220 C SYSTEM    IS-19C

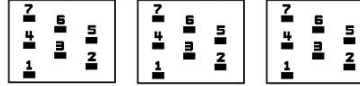
*Note: Design is based on 45.00KVA & 150C Rise 3.4% Imp.*

PRIMARY (H)    480 VOLTS (LINE-LINE)  
SECONDARY (X)    208 VOLTS (LINE-LINE)  
                            120 VOLTS (LINE-NEUTRAL)

JUMPER CONNECTION	TAP VOLTS
1	502
2	491
3	480
4	469
5	455
6	444
7	433



### COIL TAP ARRANGMENT



<b>NET WGT</b>	<b>INSPECTION &amp; FINAL TEST</b>
480 LB	
217.7 Kg	<b>NOG</b>
88850	N137!
UX73C	091021



LISTED 769G

ELECTROSTATIC GROUND SHIELD IN EACH PHASE

ENCLOSURE TYPE 2 (IP20). OR RAINPROOF TYPE 3R (IP22) WHEN PROVIDED SHIELD 9T18Y1072G06  
**SUITABLE FOR NONSINUSOIDAL CURRENT LOAD WITH K-FACTOR NOT TO EXCEED 4**

**BEFORE HANDLING, INSTALLING AND OPERATING, SEE INSTRUCTION 475A667AAP001**  
COPPER CONDUCTOR    PRIMARY: 10 KV BIL    SECONDARY: 10 KV BIL  
IN ACCORDANCE WITH NEC SECTION 450-9, ALLOW AT LEAST SIX INCHES CLEARANCE FOR VENTILATION.  
**CHECK ADDITIONAL NEC AND LOCAL CODE**

ASSEMBLED IN MEXICO

X3 H3 X2 H2 X1 H1 -

Note: X0 at the top

Outline: 303B111GEUXP73C

NEMA CLASS AA DRY TYPE TRANSFORMER

Meets DOE 2016 efficiency

X3 H3 X2 H2 X1 H1



\*2M000000\*

X3 H3 X2 H2 X1 H1



\*3M000000\*

X0