



# Transformer



\*1M0000000\*

Catalog Number      Type QL

### 9T14C1003G33

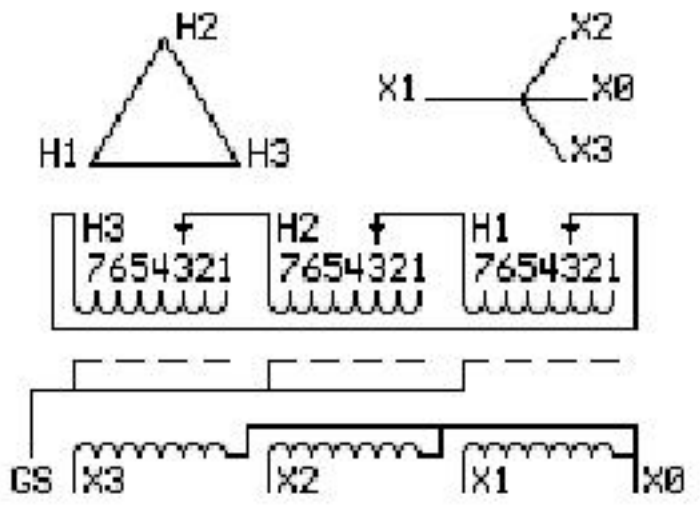
### 45.0 KVA    60 HZ    3 PH 2.6 % IMP

40 C AMB.    115 C RISE    220 C SYSTEM    IS-19C

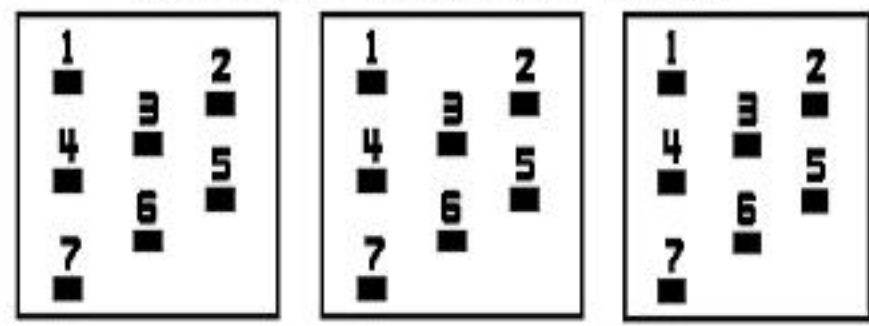
Note: Design is based on 75.00KVA & 150C Rise 4.3% Imp.

PRIMARY (H)    480 VOLTS (LINE-LINE)  
SECONDARY (X)    208 VOLTS (LINE-LINE)  
                          120 VOLTS (LINE-NEUTRAL)

ELECTROSTATIC GROUND SHIELD IN EACH PHASE



### COIL TAP ARRANGEMENT



| JUMPER CONNECTION |       |
|-------------------|-------|
| TAP               | VOLTS |
| 1                 | 503   |
| 2                 | 494   |
| 3                 | 480   |
| 4                 | 467   |
| 5                 | 458   |
| 6                 | 445   |
| 7                 | 431   |

NET WGT  
661 LB  
299.8 Kg

59038  
UY74C  
NOG  
011516

INSPECTION  
&  
FINAL TEST  
N603!



Assembled in Mexico

ENCLOSURE TYPE 2 (IP20). OR RAINPROOF TYPE 3R (IP22) WHEN PROVIDED SHIELD 9T18Y1074G06

SUITABLE FOR NONSINUSOIDAL CURRENT LOAD WITH K-FACTOR NOT TO EXCEED 4

BEFORE HANDLING, INSTALLING AND OPERATING, SEE INSTRUCTION 475A667AAP001

COPPER CONDUCTOR      PRIMARY: 10 KV BIL      SECONDARY: 10 KV BIL      Outline: 303B111GEUY74C

IN ACCORDANCE WITH NEC SECTION 450-9, ALLOW AT LEAST SIX INCHES CLEARANCE FOR VENTILATION. CHECK ADDITIONAL NEC AND LOCAL CODE

X3 H3 X2 H2 X1 H1 -

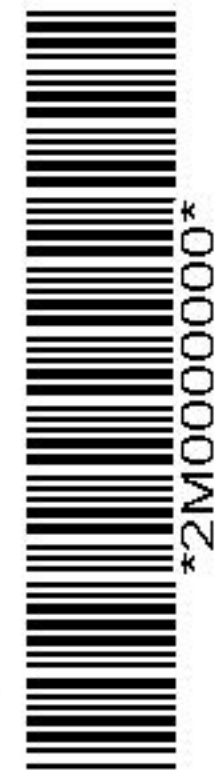
- - - - -

Note: X0 at bottom

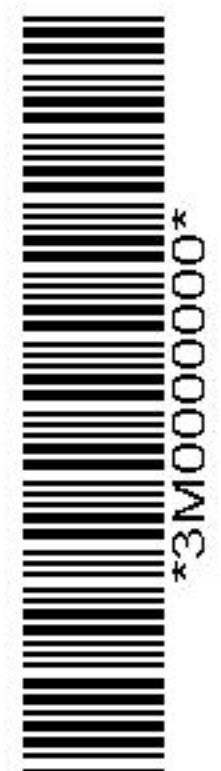
X3 H3 X2 H2 X1 H1

X3 H3 X2 H2 X1 H1

X0



\*2M0000000\*



\*3M0000000\*