

**GE Transformer**

—  
**by ABB**



\*1M000000\*

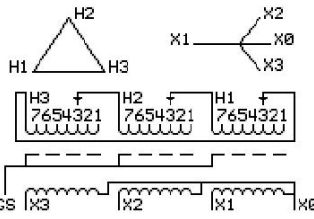
**Catalog Number**      **Type QL**  
**9T14C1004G34**

75.0 KVA    60 HZ    3 PH    3.7 % IMP  
40 C AMB.    115 C RISE    220 C SYSTEM    IS-19C

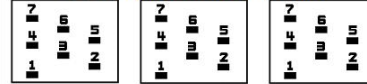
Note: Design is based on 75.00KVA & 115C Rise 3.7% Imp.

PRIMARY (H)    480 VOLTS (LINE-LINE)  
SECONDARY (X)    208 VOLTS (LINE-LINE)  
                                 120 VOLTS (LINE-NEUTRAL)

JUMPER CONNECTION TAP	VOLTS
1	505
2	490
3	480
4	470
5	455
6	445
7	430



**COIL TAP ARRANGEMENT**



**NET WGT**  
748 LB  
339.3 Kg  
89496  
UX74C

**INSPECTION & FINAL TEST**  
NOG  
N139!  
092021



ELECTROSTATIC GROUND SHIELD IN EACH PHASE

ENCLOSURE TYPE 2 (IP20). OR RAINPROOF TYPE 3R (IP22) WHEN PROVIDED SHIELD 9T18Y1074G06

SUITABLE FOR NONSINUSOIDAL CURRENT LOAD WITH K-FACTOR NOT TO EXCEED 4

BEFORE HANDLING, INSTALLING AND OPERATING, SEE INSTRUCTION 475A667AAP001

COPPER CONDUCTOR    PRIMARY: 10 KV BIL    SECONDARY: 10 KV BIL

IN ACCORDANCE WITH NEC SECTION 450-9, ALLOW AT LEAST SIX INCHES CLEARANCE FOR VENTILATION.

CHECK ADDITIONAL NEC AND LOCAL CODE

**ASSEMBLED IN MEXICO**

**X3   H3   X2   H2   X1   H1**

Note: X0 at the bottom

Outline: 303B111GEUXP74C

NEMA CLASS AA DRY TYPE TRANSFORMER

Meets DOE 2016 efficiency

X3 H3 X2 H2 X1 H1  
- - - - -  
X3 H3 X2 H2 X1 H1  
- - - - -



\*2M000000\*



\*3M000000\*

X0