

# GE Transformer

by ABB



\*1M000000\*

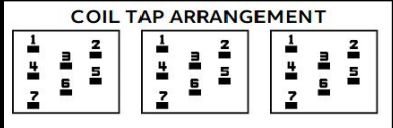
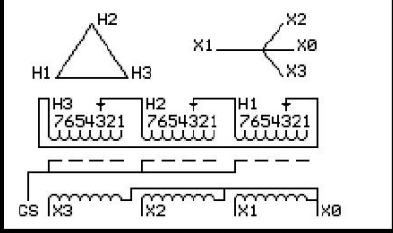
**Catalog Number**      **Type** **QL**  
**9T14C1173G33**

45.0 KVA    60 HZ    3 PH    3 % IMP  
 40 C AMB.    115 C RISE    220 C SYSTEM    IS-19C

Note: Design is based on 75.00KVA & 150C Rise 5.1% Imp.

PRIMARY (H)    480 VOLTS (LINE-LINE)  
 SECONDARY (X)    480 VOLTS (LINE-LINE)  
                                  277 VOLTS (LINE-NEUTRAL)

JUMPER CONNECTION	TAP VOLTS
1	504
2	491
3	480
4	466
5	458
6	445
7	432



**NET WGT**  
 661 LB  
 299.8 Kg  
 89627 UY74C

**INSPECTION & FINAL TEST**  
 NOG  
 N139!  
 092021



ELECTROSTATIC GROUND SHIELD IN EACH PHASE

ENCLOSURE TYPE 2 (IP20). OR RAINPROOF TYPE 3R (IP22) WHEN PROVIDED SHIELD 9T18Y1074G06

SUITABLE FOR NONSINUSOIDAL CURRENT LOAD WITH K-FACTOR NOT TO EXCEED 4

BEFORE HANDLING, INSTALLING AND OPERATING, SEE INSTRUCTION 475A667AAP001

COPPER CONDUCTOR    PRIMARY: 10 KV BIL    SECONDARY: 10 KV BIL

IN ACCORDANCE WITH NEC SECTION 450-9, ALLOW AT LEAST SIX INCHES CLEARANCE FOR VENTILATION.

CHECK ADDITIONAL NEC AND LOCAL CODE

ASSEMBLED IN MEXICO

X3   H3   X2   H2   X1   H1

Note: X0 at the bottom

Outline: 303B111GEUY74C

NEMA CLASS AA DRY TYPE TRANSFORMER

Meets DOE 2016 efficiency

X3	H3	X2	H2	X1	H1
-	-	-	-	-	-
X3	H3	X2	H2	X1	H1
-	-	-	-	-	-

\*2M000000\*

\*3M000000\*