



Transformer

by ABB



1M000000

Catalog Number **Type QL**
9T14C1454G64

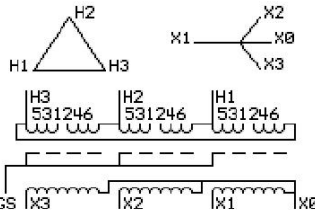
75.0 KVA 60 HZ 3 PH 4.3 % IMP
 40 C AMB. 80 C RISE 220 C SYSTEM IS-19C

Note: Design is based on 112.5KVA & 150C Rise 6.6% Imp.

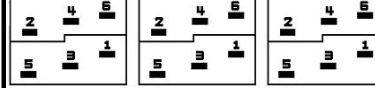
PRIMARY (H) 208 VOLTS (LINE-LINE)
 SECONDARY (X) 208 VOLTS (LINE-LINE)
 120 VOLTS (LINE-NEUTRAL)

JUMPER CONNECTION

TAP	VOLTS
1-2	218
2-3	213
3-4	208
4-5	202
5-6	197



COIL TAP ARRANGEMENT



NET WGT
 790 LB
 358.3 Kg
 89759
 DY75C

INSPECTION & FINAL TEST
 NOG
 N137!
 091021



LISTED 769G

X3 - X2 - X1 - - H3 - H2 - H1

X3 - X2 - X1 - - H3 - H2 - H1

X3 - X2 - X1 - - H3 - H2 - H1

X3 - X2 - X1 - - H3 - H2 - H1

X3 - X2 - X1 - - H3 - H2 - H1

X3 - X2 - X1 - - H3 - H2 - H1

X3 - X2 - X1 - - H3 - H2 - H1

X3 - X2 - X1 - - H3 - H2 - H1

X3 - X2 - X1 - - H3 - H2 - H1

X3 - X2 - X1 - - H3 - H2 - H1

X3 - X2 - X1 - - H3 - H2 - H1

ELECTROSTATIC GROUND SHIELD IN EACH PHASE

ENCLOSURE TYPE 2 (IP20). OR RAINPROOF TYPE 3R (IP22) WHEN PROVIDED SHIELD 9T18Y1074G06
 SUITABLE FOR NONSINUSOIDAL CURRENT LOAD WITH K-FACTOR NOT TO EXCEED 4

BEFORE HANDLING, INSTALLING AND OPERATING, SEE INSTRUCTION 475A667AAP001
 COPPER CONDUCTOR PRIMARY: 10 KV BIL SECONDARY: 10 KV BIL
 IN ACCORDANCE WITH NEC SECTION 450-9, ALLOW AT LEAST SIX INCHES CLEARANCE FOR VENTILATION.
 CHECK ADDITIONAL NEC AND LOCAL CODE

ASSEMBLED IN MEXICO

X3 - X2 - X1 - -
 - H3 - H2 - - H1

Note: X0 at the bottom

Outline: 303B111GEDYP75C

NEMA CLASS AA DRY TYPE TRANSFORMER

Meets DOE 2016 efficiency