

Transformer

by **ABB**



1M000000

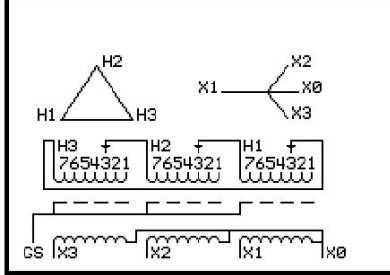
Catalog Number **Type QL**

9T17A1001G03

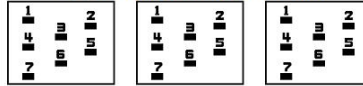
15.0 KVA 60 HZ 3 PH 5.4 % IMP
40 C AMB. 150 C RISE 220 C SYSTEM IS-19C

PRIMARY (H) 480 VOLTS (LINE-LINE)
SECONDARY (X) 208 VOLTS (LINE-LINE)
 120 VOLTS (LINE-NEUTRAL)

JUMPER CONNECTION	TAP VOLTS
1	504
2	492
3	480
4	468
5	456
6	444
7	432



COIL TAP ARRANGEMENT



NET WGT INSPECTION & FINAL TEST
240 LB TEST
108.9 Kg NOG
90104 N139!
XV371 092021



ELECTROSTATIC GROUND SHIELD IN EACH PHASE

ENCLOSURE TYPE 2 (IP20). OR RAINPROOF TYPE 3R (IP22) WHEN PROVIDED SHIELD 9T18Y1071G06

BEFORE HANDLING, INSTALLING AND OPERATING, SEE INSTRUCTION 475A667AAP001
ALUMINUM CONDUCTOR PRIMARY: 10 KV BIL SECONDARY: 10 KV BIL
IN ACCORDANCE WITH NEC SECTION 450-9, ALLOW AT LEAST SIX INCHES CLEARANCE FOR VENTILATION.
CHECK ADDITIONAL NEC AND LOCAL CODE

NEMA CLASS AA DRY TYPE TRANSFORMER

Meets DOE 2016 efficiency

ASSEMBLED IN MEXICO

X3 - X2 - X1 - -

- H3 - H2 - H1

Note: X0 at the bottom

Outline: 303B403AAP071

X3 - X2 - X1 - - H3 - H2 - H1

X3 - X2 - X1 - - H3 - H2 - H1

X3 - X2 - X1 - - H3 - H2 - H1

X0