



# Transformer

by ABB



\*1M000000\*

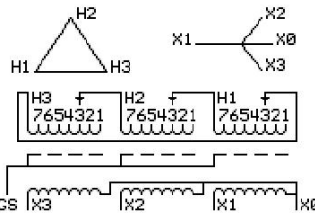
**Catalog Number**      **Type QL**  
**9T17A1002G03**

**30.0 KVA    60 HZ    3 PH    6.3 % IMP**  
**40 C AMB.    150 C RISE    220 C SYSTEM    IS-19C**

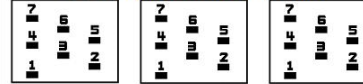
*Note: Design is based on 30.00KVA & 115C Rise 6.3% Imp.*

**PRIMARY (H)    480 VOLTS (LINE-LINE)**  
**SECONDARY (X)    208 VOLTS (LINE-LINE)**  
**120 VOLTS (LINE-NEUTRAL)**

JUMPER CONNECTION	TAP VOLTS
1	505
2	491
3	480
4	467
5	456
6	445
7	431



### COIL TAP ARRANGEMENT



**NET WGT**  
334 LB  
151.5 Kg  
90106  
XV372

**INSPECTION & FINAL TEST**  
NOG  
N139!  
092021



LISTED 769G

ELECTROSTATIC GROUND SHIELD IN EACH PHASE

ENCLOSURE TYPE 2 (IP20). OR RAINPROOF TYPE 3R (IP22) WHEN PROVIDED SHIELD 9T18Y1072G06

**BEFORE HANDLING, INSTALLING AND OPERATING, SEE INSTRUCTION 475A667AAP001**  
ALUMINUM CONDUCTOR    PRIMARY: 10 KV BIL    SECONDARY: 10 KV BIL  
IN ACCORDANCE WITH NEC SECTION 450-9, ALLOW AT LEAST SIX INCHES CLEARANCE FOR VENTILATION.  
CHECK ADDITIONAL NEC AND LOCAL CODE

ASSEMBLED IN MEXICO

**X3 - X2 - X1 - -**  
**- H3 - H2 - H1**

Note: X0 at the bottom

Outline: 303B403AAP072

NEMA CLASS AA DRY TYPE TRANSFORMER

Meets DOE 2016 efficiency

**X3 - X2 - X1 - -**  
**- H3 - H2 - H1**

**X3 - X2 - X1 - -**  
**- H3 - H2 - H1**

**X0**

\*2M000000\*

\*3M000000\*