



Transformer

by ABB



1M000000

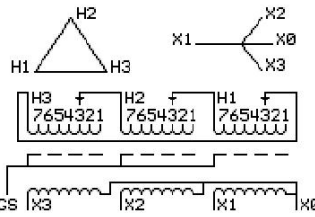
Catalog Number **Type QL**
9T17A1451G33

15.0 KVA 60 HZ 3 PH 5.5 % IMP
40 C AMB. 115 C RISE 220 C SYSTEM IS-19C

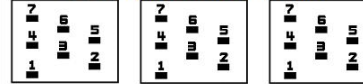
PRIMARY (H) 208 VOLTS (LINE-LINE)
SECONDARY (X) 208 VOLTS (LINE-LINE)
120 VOLTS (LINE-NEUTRAL)

JUMPER CONNECTION

TAP	VOLTS
1	218
2	213
3	208
4	202
5	198
6	193
7	188



COIL TAP ARRANGEMENT



NET WGT
240 LB
108.9 Kg

INSPECTION & FINAL TEST
NOG
N139!
092021



ELECTROSTATIC GROUND SHIELD IN EACH PHASE

ENCLOSURE TYPE 2 (IP20). OR RAINPROOF TYPE 3R (IP22) WHEN PROVIDED SHIELD 9T18Y1071G06

ASSEMBLED IN MEXICO

BEFORE HANDLING, INSTALLING AND OPERATING, SEE INSTRUCTION 475A667AAP001

ALUMINUM CONDUCTOR PRIMARY: 10 KV BIL SECONDARY: 10 KV BIL

IN ACCORDANCE WITH NEC SECTION 450-9, ALLOW AT LEAST SIX INCHES CLEARANCE FOR VENTILATION.

CHECK ADDITIONAL NEC AND LOCAL CODE

X3 - X2 - X1 - -
- H3 - H2 - H1

Note: X0 at the bottom

Outline: 303B403AAP071

NEMA CLASS AA DRY TYPE TRANSFORMER

Meets DOE 2016 efficiency

X3 - X2 - X1 - -
- H3 - H2 - H1

X3 - X2 - X1 - -
- H3 - H2 - H1

X0

2M000000

3M000000