



# Transformer

by ABB



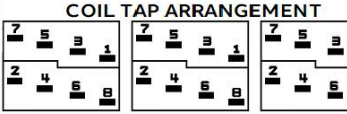
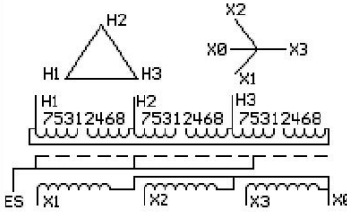
\*1M000000\*

**Catalog Number** 9T17A1455G03 **Type** QL

112.5 KVA 60 HZ 3 PH 5.4 % IMP  
40 C AMB. 150 C RISE 220 C SYSTEM IS-19C

PRIMARY (H) 208 VOLTS (LINE-LINE)  
SECONDARY (X) 208 VOLTS (LINE-LINE)  
120 VOLTS (LINE-NEUTRAL)

JUMPER CONNECTION	TAP VOLTS
1-2	218
2-3	212
3-4	208
4-5	202
5-6	197
6-7	191
7-8	186



**NET WGT**  
765 LB  
347.0 Kg  
90116  
XV375

**INSPECTION & FINAL TEST**  
NOG  
N139!  
092021



ELECTROSTATIC GROUND SHIELD IN EACH PHASE

ENCLOSURE TYPE 2 (IP20). OR RAINPROOF TYPE 3R (IP22) WHEN PROVIDED SHIELD 9T18Y1074G06

**BEFORE HANDLING, INSTALLING AND OPERATING, SEE INSTRUCTION 475A667AAP001**  
ALUMINUM CONDUCTOR PRIMARY: 10 KV BIL SECONDARY: 10 KV BIL  
IN ACCORDANCE WITH NEC SECTION 450-9, ALLOW AT LEAST SIX INCHES CLEARANCE FOR VENTILATION.  
CHECK ADDITIONAL NEC AND LOCAL CODE

ASSEMBLED IN MEXICO

X3 - X2 - X1 - -  
- H3 - H2 - H1

Note: X0 at the bottom

Outline: 303B403AAP075

NEMA CLASS AA DRY TYPE TRANSFORMER

Meets DOE 2016 efficiency

X3 - X2 - X1 - -  
- H3 - H2 - H1

X3 - X2 - X1 - -  
- H3 - H2 - H1

X0

X3 - X2 - X1 - -  
- H3 - H2 - H1

X3 - X2 - X1 - -  
- H3 - H2 - H1

\*2M000000\*

\*3M000000\*