



# Transformer

by ABB



\*1M000000\*

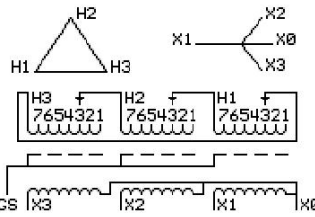
**Catalog Number**      **Type QL**  
**9T17C1003G63**

45.0 KVA    60 HZ    3 PH    3.4 % IMP  
 40 C AMB.    80 C RISE    220 C SYSTEM    IS-19C

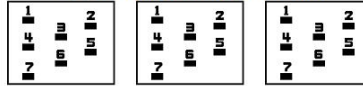
Note: Design is based on 75.00KVA & 150C Rise 5.8% Imp.

**PRIMARY (H)      480 VOLTS (LINE-LINE)**  
**SECONDARY (X)    208 VOLTS (LINE-LINE)**  
                             120 VOLTS (LINE-NEUTRAL)

JUMPER CONNECTION	TAP VOLTS
1	502
2	491
3	480
4	469
5	455
6	444
7	433



**COIL TAP ARRANGEMENT**



**NET WGT**  
 710 LB  
 322.1 Kg  
 90119  
 XV374

**INSPECTION & FINAL TEST**  
 NOG  
 N139!  
 092021



ELECTROSTATIC GROUND SHIELD IN EACH PHASE

ENCLOSURE TYPE 2 (IP20). OR RAINPROOF TYPE 3R (IP22) WHEN PROVIDED SHIELD 9T18Y1074G06

**BEFORE HANDLING, INSTALLING AND OPERATING, SEE INSTRUCTION 475A667AAP001**  
 COPPER CONDUCTOR      PRIMARY: 10 KV BIL      SECONDARY: 10 KV BIL  
 IN ACCORDANCE WITH NEC SECTION 450-9, ALLOW AT LEAST SIX INCHES CLEARANCE FOR VENTILATION.  
 CHECK ADDITIONAL NEC AND LOCAL CODE

NEMA CLASS AA DRY TYPE TRANSFORMER

Meets DOE 2016 efficiency

ASSEMBLED IN MEXICO

**X3 - X2 - X1 - -**  
**- H3 - H2 - H1**

Note: X0 at the bottom

Outline: 303B403AAP074

- - - - -

X3 - X2 - X1 - - H1

- H3 - H2 - H1

X3 - X2 - X1 - -

- H3 - H2 - H1

X0