



# Transformer



\*1M000000\*

**Catalog Number**  
**9T61B3870G03**

**Type QL**

**11.0 KVA 60 HZ 3 PH 4.3 % IMP**

40 C AMB. 150 C RISE 220 C SYSTEM IS-19C

Note: Design is based on 15.00KVA & 150C Rise 5.8% Imp.

PRIMARY (H) 480 VOLTS (LINE-LINE)  
SECONDARY (X) 208 VOLTS (LINE-LINE)  
120 VOLTS (LINE-NEUTRAL)

ELECTROSTATIC GROUND SHIELD IN EACH PHASE

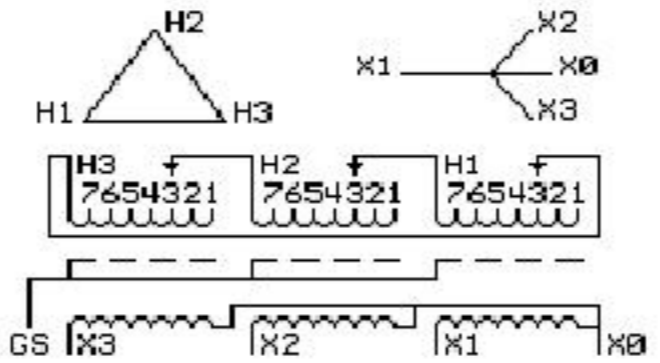
ENCLOSURE TYPE 2 (IP30). RAINPROOF TYPE 3R ENCLOSURE (IP32) WHEN PROVIDED SHIELD 9T18Y4317G11  
SUITABLE FOR NONSINUSOIDAL CURRENT LOAD WITH K-FACTOR NOT TO EXCEED 13  
BEFORE HANDLING, INSTALLING AND OPERATING, SEE INSTRUCTION 475A667AAP001 Outline: 303B401AAP071  
ALUMINUM CONDUCTOR PRIMARY: 10 KV BIL SECONDARY: 10 KV BIL

**IN ACCORDANCE WITH NEC SECTION 450-9, ALLOW AT LEAST SIX INCHES CLEARANCE FOR VENTILATION. CHECK ADDITIONAL NEC AND LOCAL CODES.**

GE Energy Industrial Solutions

**NEMA CLASS AA DRY TYPE TRANSFORMER**

Meets TP-1 2002 efficiency



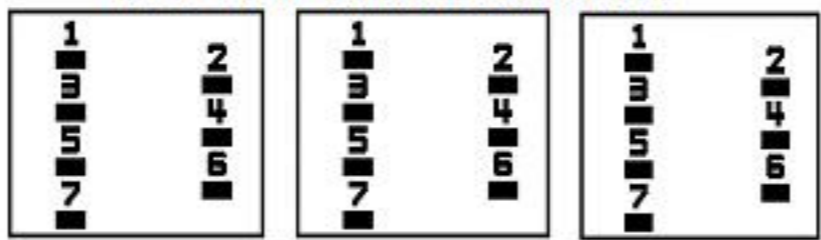
JUMPER CONNECTION	
TAP	VOLTS
1	504
2	491
3	480
4	468
5	457
6	444
7	431

NET WGT  
240 LB  
108.9 Kg

57785  
XV371  
NOG  
092215

INSPECTION & FINAL TEST  
N539!

### COIL TAP ARRANGEMENT



LISTED 769G

Assembled in Mexico

X3 - X2 - X1 - X0  
- H3 - H2 - H1

Note: Standard

X0  
- X1 -  
- X2 -  
- H3 -



\*2M000000\*

X0  
- X1 -  
- X2 -  
- H3 -



\*3M000000\*