



# Transformer

Catalog Number 9T61C9877G23

**9Q3C225AAAA13B2T30**

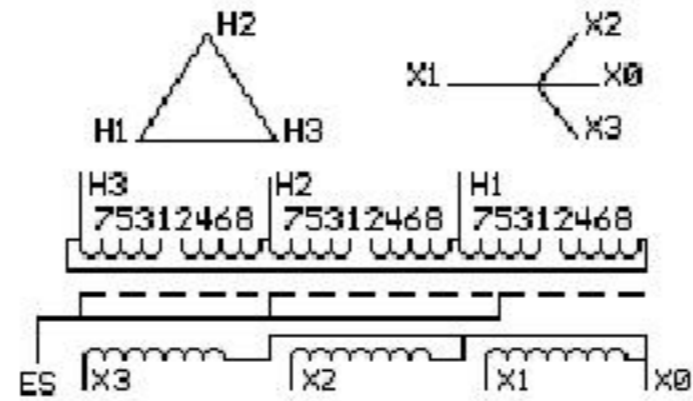
**225.0 KVA 60 HZ 3 PH 1.7 % IMP**

40 C AMB. 115 C RISE 220 C SYSTEM IS-19C Type: QL

Note: Design is based on 500.0KVA & 150C Rise 4% Imp.

PRIMARY (H)	480 VOLTS (LINE-LINE)
SECONDARY (X)	208 VOLTS (LINE-LINE)
	120 VOLTS (LINE-NEUTRAL)

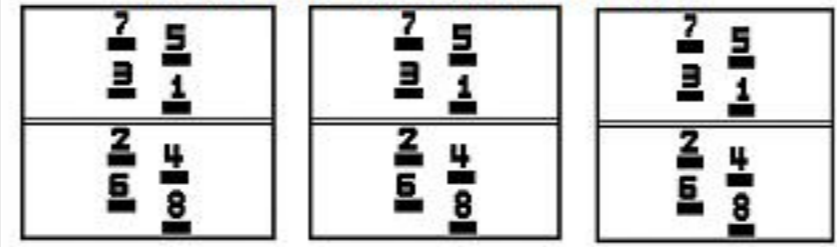
ELECTROSTATIC GROUND SHIELD IN EACH PHASE



### JUMPER CONNECTION

TAP	VOLTS
1-2	502
2-3	491
3-4	480
4-5	469
5-6	459
6-7	448
7-8	437

### COIL TAP ARRANGEMENT



NET WGT 4050 LB 1837.1 Kg

090115	N536!	YF379
	55826	NOG

ENCLOSURE TYPE 2 (IP30). RAINPROOF TYPE 3R ENCLOSURE (IP32) WHEN PROVIDED SHIELD 9T18Y4322G68

SUITABLE FOR NONSINUSOIDAL CURRENT LOAD WITH K-FACTOR NOT TO EXCEED 13  
 BEFORE HANDLING, INSTALLING AND OPERATING, SEE INSTRUCTION 475A667AAP001  
 COPPER CONDUCTOR PRIMARY: 10 KV BIL SECONDARY: 10 KV BIL



LISTED 769G

**IN ACCORDANCE WITH NEC SECTION 450-9, ALLOW AT LEAST SIX INCHES CLEARANCE FOR VENTILATION. CHECK ADDITIONAL NEC AND LOCAL CODES.**

Outline: 3038919AAP179  
Assembled in Mexico

INSPECTION & FINAL TEST  
N536!

