



# Transformer



\*1M000000\*

Catalog Number **9Q3C045AAAC04A2T30** Type **QL**

**9T64C9843G53**

**45.0 KVA 60 HZ 3 PH 3.7 % IMP**

40 C AMB. 150 C RISE 220 C SYSTEM IS-19C

Note: Design is based on 75.00KVA & 150C Rise 6.2% Imp.

PRIMARY (H) 480 VOLTS (LINE-LINE)  
SECONDARY (X) 240 VOLTS (LINE-LINE)  
120 VOLTS (1 PH MIDTHAP)

ELECTROSTATIC GROUND SHIELD IN EACH PHASE

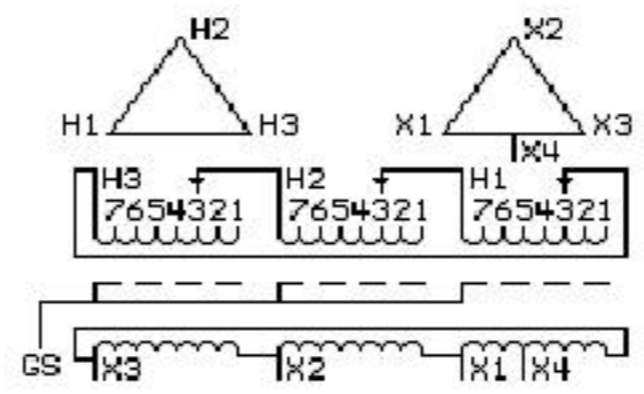
ENCLOSURE TYPE 2 (IP30). RAINPROOF TYPE 3R ENCLOSURE (IP32) WHEN PROVIDED SHIELD 9T18Y4317G06  
SUITABLE FOR NONSINUSOIDAL CURRENT LOAD WITH K-FACTOR NOT TO EXCEED 4  
BEFORE HANDLING, INSTALLING AND OPERATING, SEE INSTRUCTION 475A667AAP001 Outline: 303B401AAP074  
COPPER CONDUCTOR PRIMARY: 10 KV BIL SECONDARY: 10 KV BIL

IN ACCORDANCE WITH NEC SECTION 450-9, ALLOW AT LEAST SIX INCHES CLEARANCE FOR VENTILATION. CHECK ADDITIONAL NEC AND LOCAL CODES.

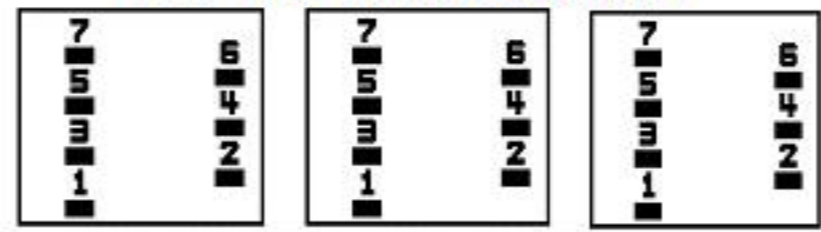
GE Energy Industrial Solutions

NEMA CLASS AA DRY TYPE TRANSFORMER

Meets TP-1 2002 efficiency



### COIL TAP ARRANGEMENT



JUMPER CONNECTION TAP	VOLTS
1	505
2	491
3	480
4	469
5	455
6	444
7	433

NET WGT  
710 LB  
322.1 Kg

38033  
XV374  
NOG  
081115

INSPECTION & FINAL TEST N533!



LISTED 769G

Assembled in Mexico

X3 - X2 - X1 - X4  
- H3 - H2 - H1

Note: Mid-Tap

X4

X1 -

X2 -

X3 -

H3 - H2 - H1

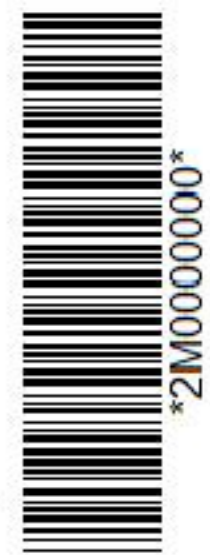
X4

X1 -

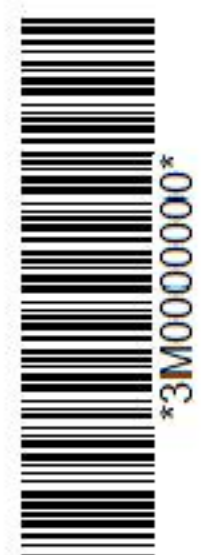
X2 -

X3 -

H3 - H2 - H1



\*2M000000\*



\*3M000000\*