



# Transformer



\*M0000000\*

Catalog Number      Type QL

9T83B3425G03

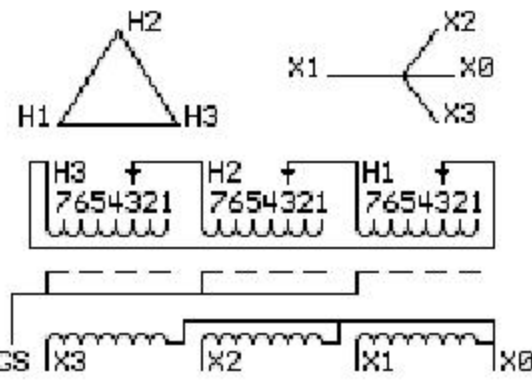
112.5 KVA    60 HZ      3 PH 4.8 % IMP

40 C AMB.    150 C RISE    220 C SYSTEM    IS-19C

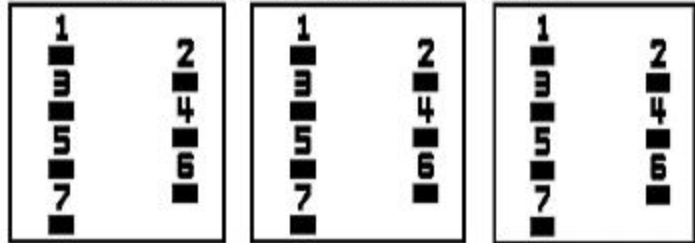
Note: Design is based on 150.0KVA & 150C Rise 6.3% Imp.

PRIMARY (H)    480 VOLTS (LINE-LINE)  
SECONDARY (X)    208 VOLTS (LINE-LINE)  
                          120 VOLTS (LINE-NEUTRAL)

ELECTROSTATIC GROUND SHIELD IN EACH PHASE



### COIL TAP ARRANGEMENT



| JUMPER CONNECTION |       |
|-------------------|-------|
| TAP               | VOLTS |
| 1                 | 501   |
| 2                 | 491   |
| 3                 | 480   |
| 4                 | 470   |
| 5                 | 454   |
| 6                 | 444   |
| 7                 | 433   |

NET WGT  
904 LB  
410.1 Kg  
9T83B5876G03  
14613  
EE76  
NOG  
012113

INSPECTION & FINAL TEST N304!



Assembled in Mexico

ENCLOSURE TYPE 2 (IP30). RAINPROOF TYPE 3R ENCLOSURE (IP32) WHEN PROVIDED SHIELD 9T18Y4317G07

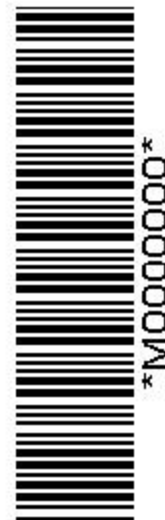
SUITABLE FOR NONSINUSOIDAL CURRENT LOAD WITH K-FACTOR NOT TO EXCEED 4  
BEFORE HANDLING, INSTALLING AND OPERATING, SEE INSTRUCTION 475A667AAP001      Outline: 303B401AAP076  
ALUMINUM CONDUCTOR      PRIMARY: 10 KV BIL      SECONDARY: 10 KV BIL

IN ACCORDANCE WITH NEC SECTION 450-9, ALLOW AT LEAST SIX INCHES CLEARANCE FOR VENTILATION. CHECK ADDITIONAL NEC AND LOCAL CODES.

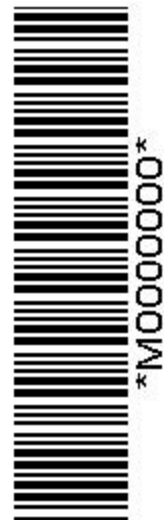
X3 - X2 - X1 - -  
- H3 - H2 - H1

Note: X0 Terminal at the bottom

X3 - X2 - X1 - -  
- H3 - H2 - H1  
X3 - X2 - X1 - -  
- H3 - H2 - H1  
X0



\*M0000000\*



\*M0000000\*