



# Transformer



\*1M000000\*

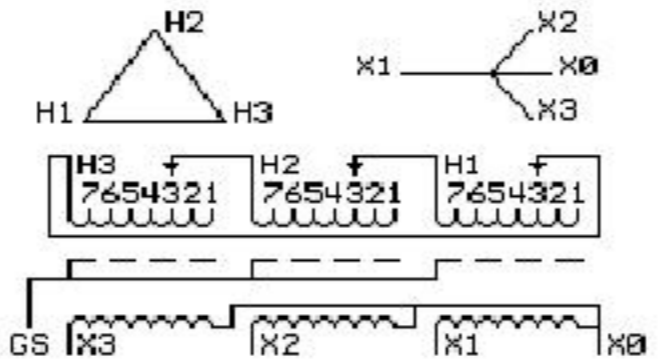
Catalog Number  
**9T83B3461G03**

Type **QL**

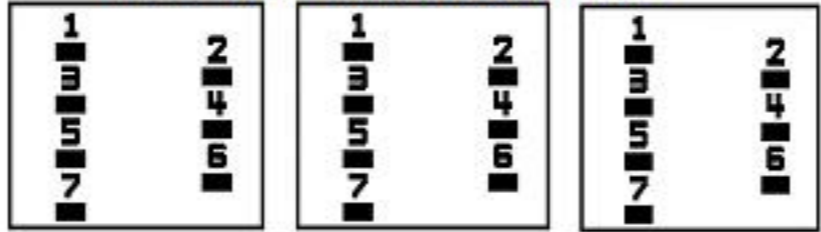
**15.0 KVA 60 HZ 3 PH 6.2 % IMP**

40 C AMB. 150 C RISE 220 C SYSTEM IS-19C

Note: Design is based on 15.00KVA & 150C Rise 5.8% Imp.



### COIL TAP ARRANGEMENT



NSALEØ 15.000480C  
+2,-4 2.50%)  
2Ø8Y/12Ø

NET WGT  
240 LB  
108.9 Kg

Ø911  
N N9T18Y4317G11T  
TRANSFORMER E  
ENERGY#-NOG HØ  
Ø ASCS

57765  
XV371  
NOG  
092215

INSPECTION  
&  
FINAL TEST  
N539!

52Ø



LISTED 769G

Assembled in Mexico

X3 - X2 - X1 - XØ  
- H3 - H2 - H1

Note: Standard

9T83B3141G139T83B3141G13  
15Ø922LM 3Ø3B4Ø1AAPØ71 YNNN 4Ø115  
22ØIS-19CØL 3 6ØAL1ØØ15ØY15.ØØ 5.5 24  
Ø 265 48Ø(+2,-4 2.5  
ELECTROSTATIC GROUND SHIELD IN EACH PHASE

ENCLOSURE TYPE 2 (IP3Ø). RAINPROOF TYPE 3R ENCLOSURE (IP32) WHEN PROVIDED SHIELD 9T18Y4317G11  
SUITABLE FOR NONSINUSOIDAL CURRENT LOAD WITH K-FACTOR NOT TO EXCEED 4  
BEFORE HANDLING, INSTALLING AND OPERATING, SEE INSTRUCTION 475A667AAPØØ1 Outline: 3Ø3B4Ø1AAPØ71  
ALUMINUM CONDUCTOR PRIMARY: 1Ø KV BIL SECONDARY: 1Ø KV BIL

IN ACCORDANCE WITH NEC SECTION 45Ø-9, ALLOW AT LEAST SIX INCHES  
CLEARANCE FOR VENTILATION. CHECK ADDITIONAL NEC AND LOCAL CODES.

XØ  
- X1 -  
- X2 -  
- X3 -



\*2M000000\*

H3 - H2 - H1

XØ  
- X1 -  
- X2 -  
- X3 -



\*3M000000\*

H3 - H2 - H1