



Transformer



1M000000

Catalog Number
9T83B3791G03

Type QL

15.0 KVA 60 HZ 3 PH 6.2 % IMP

40 C AMB. 150 C RISE 220 C SYSTEM IS-19C

PRIMARY (X) 208 VOLTS (LINE-LINE)
SECONDARY (H) 400 VOLTS (LINE-LINE)
231 VOLTS (LINE-NEUTRAL)

ELECTROSTATIC GROUND SHIELD IN EACH PHASE

ENCLOSURE TYPE 2 (IP30). RAINPROOF TYPE 3R ENCLOSURE (IP32) WHEN PROVIDED SHIELD 9T18Y4317G11

BEFORE HANDLING, INSTALLING AND OPERATING, SEE INSTRUCTION 475A667AAP001
ALUMINUM CONDUCTOR PRIMARY: 10 KV BIL SECONDARY: 10 KV BIL

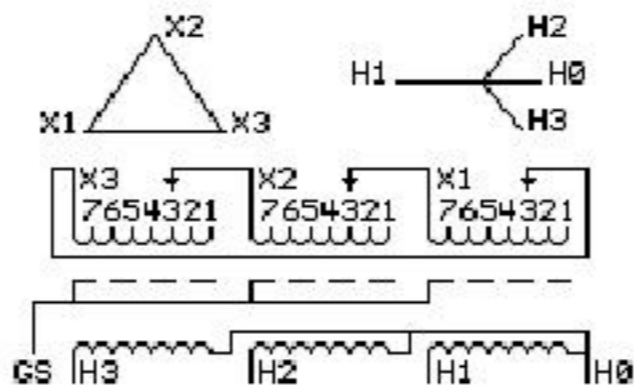
Outline: 303B401AAP071

**IN ACCORDANCE WITH NEC SECTION 450-9, ALLOW AT LEAST SIX INCHES
CLEARANCE FOR VENTILATION. CHECK ADDITIONAL NEC AND LOCAL CODES.**

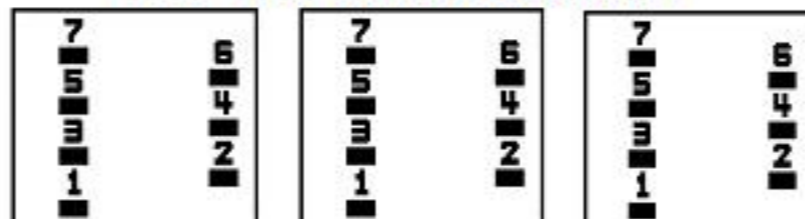
GE Energy Industrial Solutions

NEMA CLASS AA DRY TYPE TRANSFORMER

Meets TP-1 2002 efficiency



COIL TAP ARRANGEMENT



JUMPER CONNECTION	
TAP	VOLTS
1	218
2	214
3	208
4	202
5	198
6	193
7	188

NET WGT
240 LB
108.9 Kg

54449
XV371

NOG
071615

INSPECTION
&
FINAL TEST
N529!



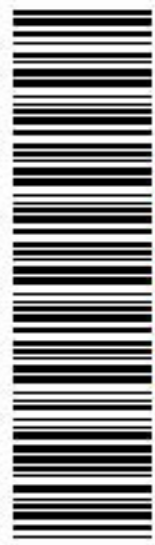
LISTED 769G

Assembled in Mexico

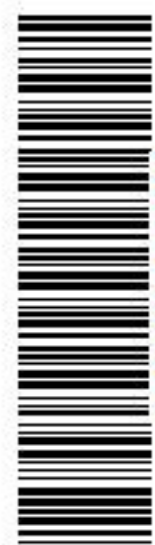
H3 - H2 - H1 - -
- X3 - X2 - X1

Note:

H1 - H1 - H0
- X1 - X1
H2 - H2 - H1 -
- X2 - X2 - X1
H3 - H3 - H2 -
- X3 - X3 - X2 -



2M000000



3M000000