



Transformer



1M000000

Catalog Number

Type QL

9Q3A015AFBL01A2T30

9T83B3791G53

15.0 KVA 60 HZ 3 PH 6.2 % IMP

40 C AMB. 150 C RISE 220 C SYSTEM IS-19C

Note: Design is based on 15.00KVA & 150C Rise 6.2% Imp.

PRIMARY (X) 208 VOLTS (LINE-LINE)
 SECONDARY (H) 400 VOLTS (LINE-LINE)
 231 VOLTS (LINE-NEUTRAL)

ELECTROSTATIC GROUND SHIELD IN EACH PHASE

ENCLOSURE TYPE 2 (IP30). RAINPROOF TYPE 3R ENCLOSURE (IP32) WHEN PROVIDED SHIELD 9T18Y4317G11

BEFORE HANDLING, INSTALLING AND OPERATING, SEE INSTRUCTION 475A667AAP001
ALUMINUM CONDUCTOR PRIMARY: 10 KV BIL SECONDARY: 10 KV BIL

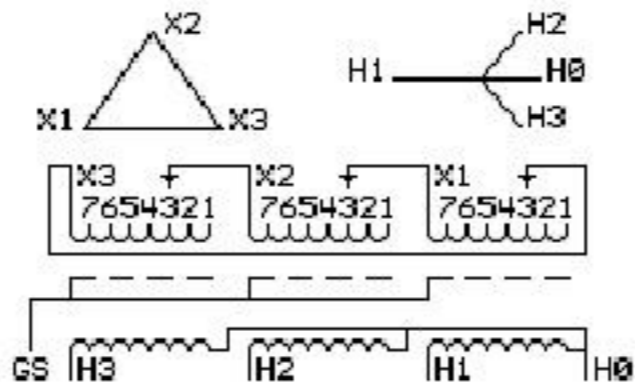
Outline: 303B401AAP071

IN ACCORDANCE WITH NEC SECTION 450-9, ALLOW AT LEAST SIX INCHES CLEARANCE FOR VENTILATION. CHECK ADDITIONAL NEC AND LOCAL CODES.

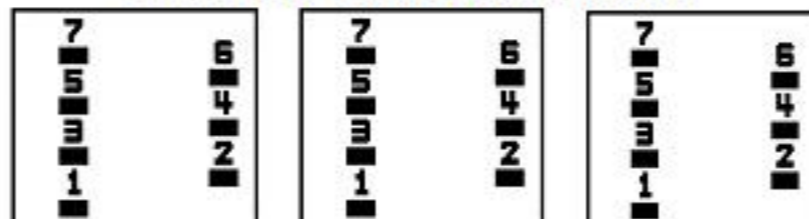
GE Energy Industrial Solutions

NEMA CLASS AA DRY TYPE TRANSFORMER

Meets TP-1 2002 efficiency



COIL TAP ARRANGEMENT



JUMPER CONNECTION TAP	VOLTS
1	218
2	214
3	208
4	202
5	198
6	193
7	188

NET WGT
240 LB
108.9 Kg

54449
XV371

NOG
092915

INSPECTION & FINAL TEST
N540!



LISTED 769G

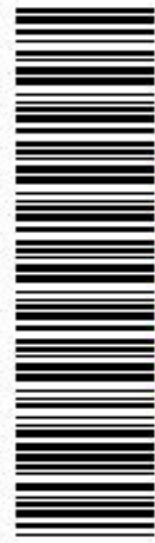
Assembled in Mexico

H3 - H2 - H1 - -
 - X3 - X2 - X1

Note:

H3 - H2 - H1 - -
 - X3 - X2 - X1
 H3 - H2 - H1 - -
 - X3 - X2 - X1

H0



2M000000



3M000000