



Transformer



M0000000

Catalog Number

Type QL

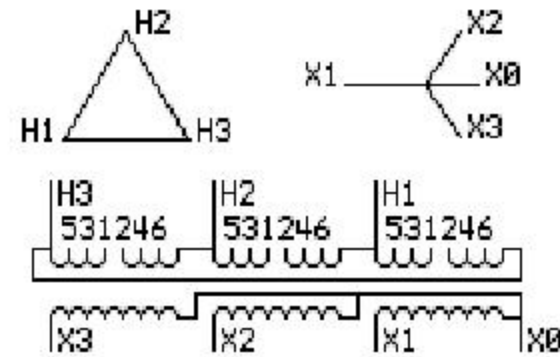
9T83B4001G20

20.0 KVA 60 HZ 3 PH 4.5 % IMP

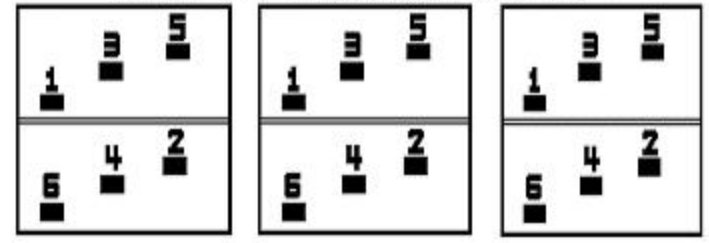
40 C AMB. 150 C RISE 220 C SYSTEM IS-19C

Note: Design is based on 27.00KVA & 150C Rise 6.1% Imp.

PRIMARY (H) 208 VOLTS (LINE-LINE)
 SECONDARY (X) 460 VOLTS (LINE-LINE)
 266 VOLTS (LINE-NEUTRAL)



COIL TAP ARRANGEMENT



JUMPER CONNECTION

TAP	VOLTS
1-2	218
3-4	208
5-6	199

NET WGT
 334 LB
 151.5 Kg
 9T83B4002G20
 24291
 RW372
 NOG
 013013

INSPECTION & FINAL TEST N305!



ENCLOSURE TYPE 2 (IP30). RAINPROOF TYPE 3R ENCLOSURE (IP32) WHEN PROVIDED SHIELD 9T18Y4317G05

Assembled in Mexico

BEFORE HANDLING, INSTALLING AND OPERATING, SEE INSTRUCTION 475A667AAP001 Outline: 303B401AAP072
 ALUMINUM CONDUCTOR PRIMARY: 10 KV BIL SECONDARY: 10 KV BIL

IN ACCORDANCE WITH NEC SECTION 450-9, ALLOW AT LEAST SIX INCHES CLEARANCE FOR VENTILATION. CHECK ADDITIONAL NEC AND LOCAL CODES.

X3 - X2 - X1 - -
 - H3 - H2 - H1

Note: X0 Terminal at the bottom

X3 - X2 - X1 - -
 - H3 - H2 - H1
 X3 - X2 - X1 - -
 - H3 - H2 - H1
 X0



M0000000



M0000000