



# Transformer



\*1M000000\*

Catalog Number

Type QL

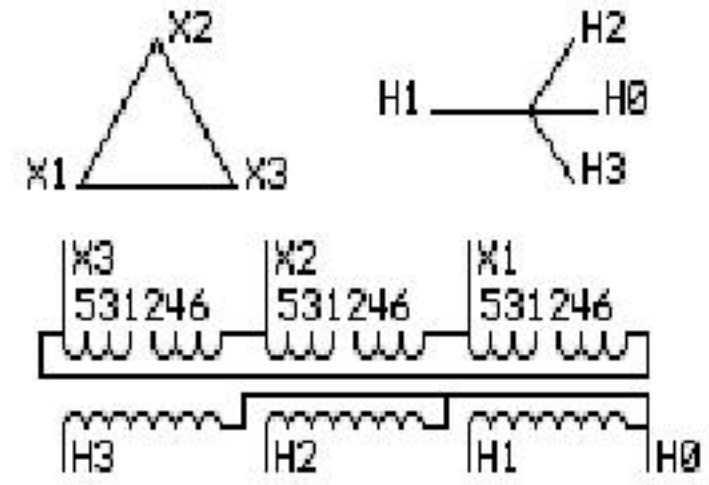
9T83B4006G28

63.0 KVA 60 HZ 3 PH 4.8 % IMP

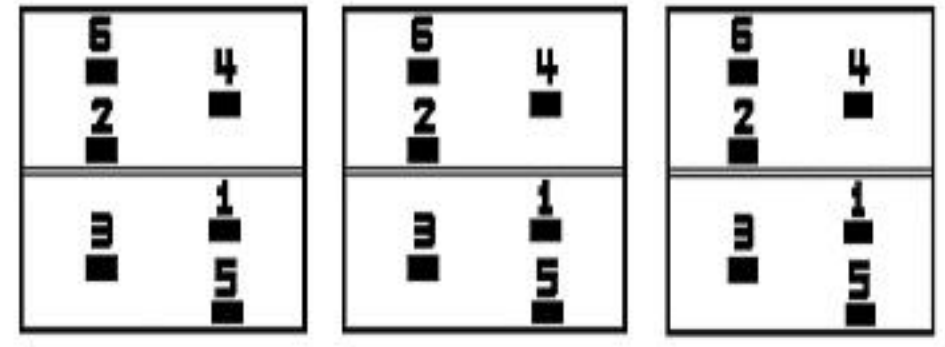
40 C AMB. 150 C RISE 220 C SYSTEM IS-19C

Note: Design is based on 75.00KVA & 150C Rise 5.8% Imp.

PRIMARY (H) 230 VOLTS (LINE-LINE)  
 SECONDARY (X) 460 VOLTS (LINE-LINE)  
 266 VOLTS (LINE-NEUTRAL)



### COIL TAP ARRANGEMENT



JUMPER CONNECTION

TAP	VOLTS
1-2	241
3-4	230
5-6	219

NET WGT  
620 LB  
281.2 Kg

55731  
XU374  
NOG  
072915

INSPECTION  
&  
FINAL TEST  
N531!



ENCLOSURE TYPE 2 (IP30). RAINPROOF TYPE 3R ENCLOSURE (IP32) WHEN PROVIDED SHIELD 9T18Y4317G06

Assembled in Mexico

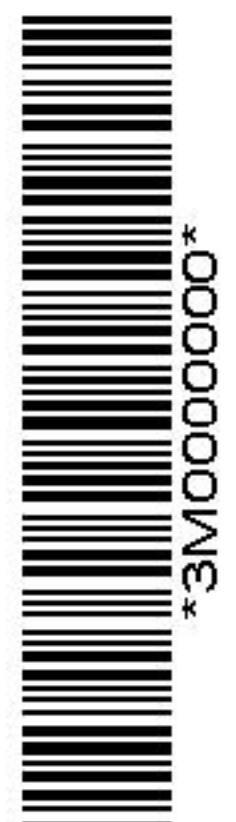
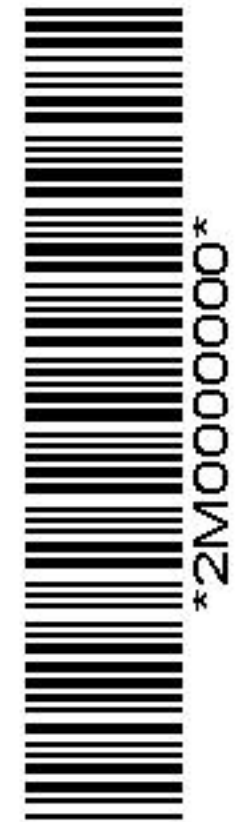
BEFORE HANDLING, INSTALLING AND OPERATING, SEE INSTRUCTION 475A667AAP001 Outline: 303B401AAP074  
ALUMINUM CONDUCTOR PRIMARY: 10 KV BIL SECONDARY: 10 KV BIL

H3 - H2 - H1 - -  
 - X3 - X2 - X1

IN ACCORDANCE WITH NEC SECTION 450-9, ALLOW AT LEAST SIX INCHES CLEARANCE FOR VENTILATION. CHECK ADDITIONAL NEC AND LOCAL CODES.

Note: H0 Terminal at the bottom

H3 - H2 - H1 -  
 - X3 - X2 - X1  
 H3 - H2 - H1 -  
 - X3 - X2 - X1



H0