



# Transformer



\*M0000000\*

**Catalog Number**  
9T83B4009G28

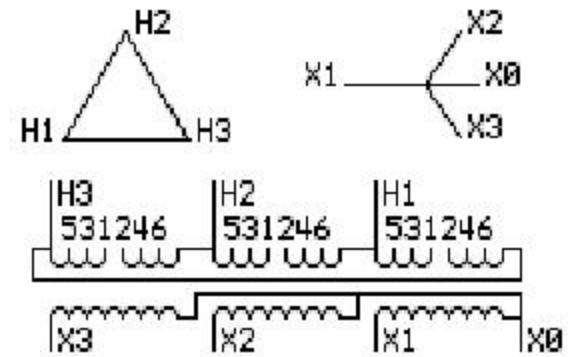
Type QL

**118.0 KVA 60 HZ 3 PH 3.7 % IMP**

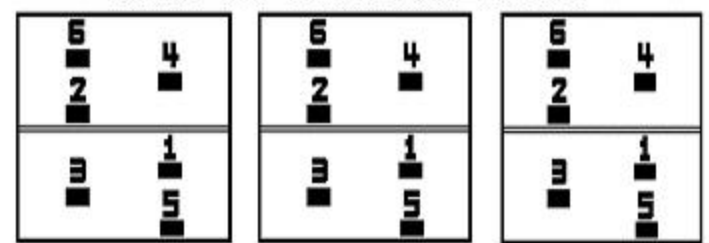
40 C AMB. 150 C RISE 220 C SYSTEM IS-19C

Note: Design is based on 145.0KVA & 150C Rise 5.7% Imp.

PRIMARY (H) 230 VOLTS (LINE-LINE)  
SECONDARY (X) 460 VOLTS (LINE-LINE)  
266 VOLTS (LINE-NEUTRAL)



### COIL TAP ARRANGEMENT



**JUMPER CONNECTION**

| TAP | VOLTS |
|-----|-------|
| 1-2 | 242   |
| 3-4 | 230   |
| 5-6 | 218   |

NET WGT  
904 LB  
410.1 Kg  
9T83B4010G28  
26175  
WV376  
NOG  
012113

INSPECTION & FINAL TEST N304!



LISTED 769G

ENCLOSURE TYPE 2 (IP30). RAINPROOF TYPE 3R ENCLOSURE (IP32) WHEN PROVIDED SHIELD 9T18Y4317G07

Assembled in Mexico

BEFORE HANDLING, INSTALLING AND OPERATING, SEE INSTRUCTION 475A667AAP001 Outline: 303B401AAP076  
ALUMINUM CONDUCTOR PRIMARY: 10 KV BIL SECONDARY: 10 KV BIL

IN ACCORDANCE WITH NEC SECTION 450-9, ALLOW AT LEAST SIX INCHES CLEARANCE FOR VENTILATION. CHECK ADDITIONAL NEC AND LOCAL CODES.

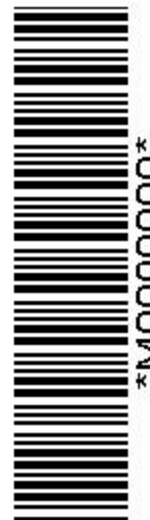
X3 - X2 - X1 - -  
- H3 - H2 - H1

Note: X0 Terminal at the bottom

X3 - X2 - X1 - -  
- H3 - H2 - H1  
X3 - X2 - X1 - -  
- H3 - H2 - H1  
X0



\*M0000000\*



\*M0000000\*