



Drive Isolation Transformer



1M000000

Catalog Number TYPE QL

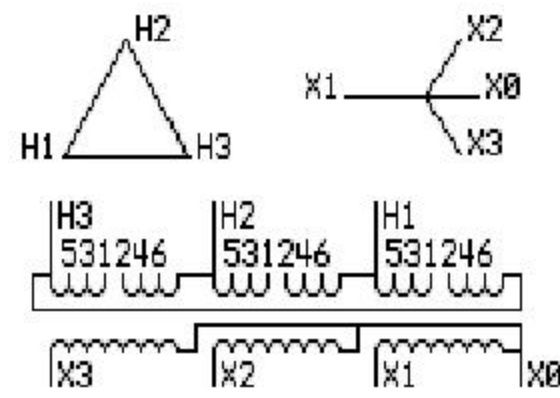
9T83B4009G71

118.0 KVA 60 HZ 3 PH 4.5 % IMP

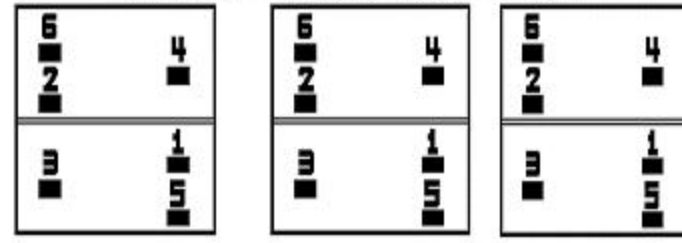
40 C AMB. 150 C RISE 220 C SYSTEM IS-19C

Note: Design is based on 145.0KVA & 150C Rise 5.6% Imp.

PRIMARY (H)	460 VOLTS (LINE-LINE)
SECONDARY (X)	325 VOLTS (LINE-LINE)
	188 VOLTS (LINE-NEUTRAL)



COIL TAP ARRANGEMENT



JUMPER CONNECTION

TAP	VOLTS
1-2	486
3-4	460
5-6	436

NET WGT
904 LB
410.1 Kg
9T83B4010G7
17483
EE76
NOG
111411

INSPECTION
&
FINAL TEST
N147!



ENCLOSURE TYPE 2 (IP30). RAINPROOF TYPE 3R ENCLOSURE (IP32) WHEN PROVIDED SHIELD 9T18Y4317G07

Assembled in Mexico

BEFORE HANDLING, INSTALLING AND OPERATING, SEE INSTRUCTION 475A667AAP001 Outline: 303B401AAP076

ALUMINUM CONDUCTOR PRIMARY: 10 KV BIL SECONDARY: 10 KV BIL

IN ACCORDANCE WITH NEC SECTION 450-9, ALLOW AT LEAST SIX INCHES CLEARANCE FOR VENTILATION. CHECK ADDITIONAL NEC AND LOCAL CODES.

X3 - X2 - X1 - -
- H3 - H2 - H1

Note: X0 Terminal at the bottom

X3 - X2 - X1 - -
- H3 - H2 - H1

X3 - X2 - X1 - -
- H3 - H2 - H1

X0

