



# Drive Isolation Transformer



\*1M000000\*

X0

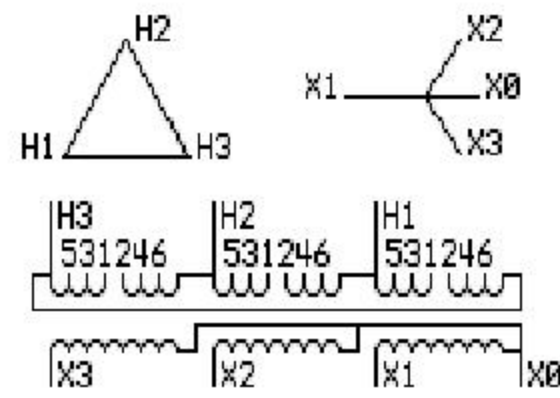
X0

Catalog Number TYPE QL

## 9T83B4012G23

220.0 KVA 60 HZ 3 PH 5.9 % IMP

40 C AMB. 150 C RISE 220 C SYSTEM IS-19C



JUMPER CONNECTION TAP VOLTS

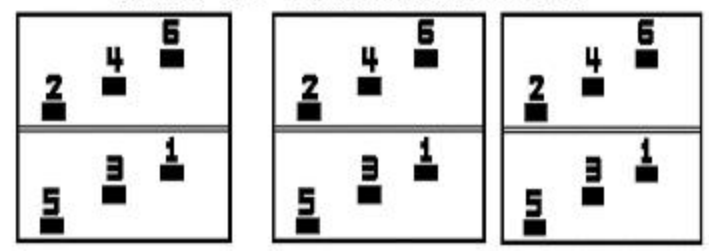
|     |     |
|-----|-----|
| 1-2 | 483 |
| 3-4 | 460 |
| 5-6 | 435 |

NET WGT  
1585 LB  
719.0 Kg  
83B4012G23  
16017  
FC79  
NOG  
011211

INSPECTION & FINAL TEST N103!

PRIMARY (H) 460 VOLTS (LINE-LINE)  
SECONDARY (X) 230 VOLTS (LINE-LINE)  
133 VOLTS (LINE-NEUTRAL)

### COIL TAP ARRANGEMENT



ENCLOSURE TYPE 2 (IP30). RAINPROOF TYPE 3R ENCLOSURE (IP32) WHEN PROVIDED SHIELD 9T18Y4322G79

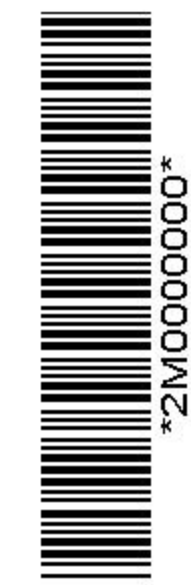
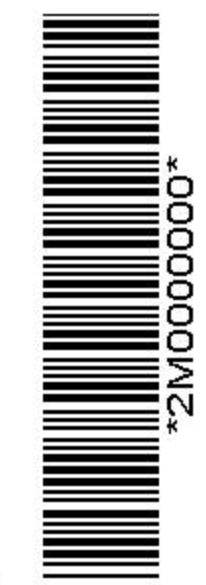
Assembled in Mexico

BEFORE HANDLING, INSTALLING AND OPERATING, SEE INSTRUCTION 475A667AAP001 Outline: 303B919AAP077  
ALUMINUM CONDUCTOR PRIMARY: 10 KV BIL SECONDARY: 10 KV BIL

X3 - X2 - X1 - X0  
- H3 - H2 - H1

IN ACCORDANCE WITH NEC SECTION 450-9, ALLOW AT LEAST SIX INCHES CLEARANCE FOR VENTILATION. CHECK ADDITIONAL NEC AND LOCAL CODES.

Note: Standard



X3 - X2 - X1 - X0

- H3 - H2 - H1

X3 - X2 - X1 - X0

- H3 - H2 - H1