



# Transformer



\*1M000000\*

Catalog Number

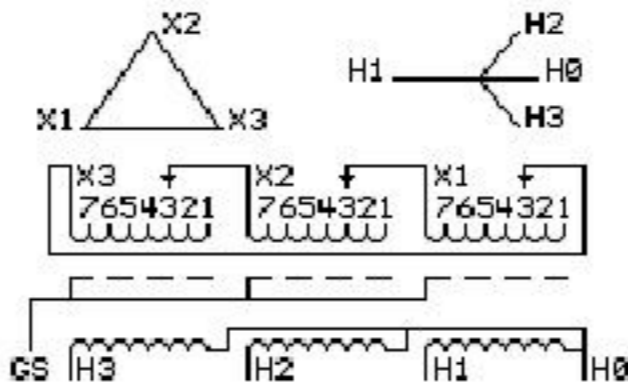
Type QL

9Q3A030AEBJ01A2T00

9T83B5662G03

30.0 KVA 60 HZ 3 PH 7.3 % IMP

40 C AMB. 150 C RISE 220 C SYSTEM IS-19C



JUMPER CONNECTION	
TAP	VOLTS
1	251
2	245
3	240
4	234
5	228
6	222
7	215

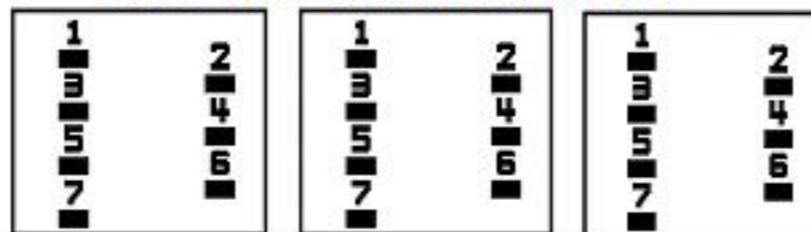
NET WGT  
334 LB  
151.5 Kg

53480  
XV372  
NOG  
071515

INSPECTION & FINAL TEST N529!

PRIMARY (X) 240 VOLTS (LINE-LINE)  
 SECONDARY (H) 380 VOLTS (LINE-LINE)  
 219 VOLTS (LINE-NEUTRAL)

### COIL TAP ARRANGEMENT



LISTED 769G

ELECTROSTATIC GROUND SHIELD IN EACH PHASE

ENCLOSURE TYPE 2 (IP30). RAINPROOF TYPE 3R ENCLOSURE (IP32) WHEN PROVIDED SHIELD 9T18Y4317G05

Assembled in Mexico

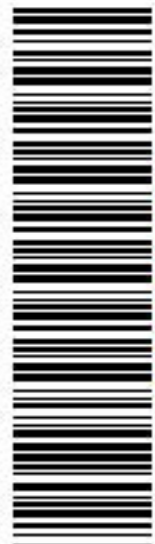
BEFORE HANDLING, INSTALLING AND OPERATING, SEE INSTRUCTION 475A667AAP001  
ALUMINUM CONDUCTOR PRIMARY: 10 KV BIL SECONDARY: 10 KV BIL

Outline: 303B401AAP072

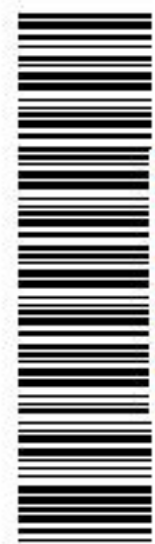
IN ACCORDANCE WITH NEC SECTION 450-9, ALLOW AT LEAST SIX INCHES CLEARANCE FOR VENTILATION. CHECK ADDITIONAL NEC AND LOCAL CODES.

H3 - H2 - H1 - -  
 - X3 - X2 - X1

Note: H0 Terminal at the bottom



\*2M000000\*



\*3M000000\*

H3 - H2 - H1 -  
 - X3 - X2 - X1  
 H3 - H2 - H1 -  
 - X3 - X2 - X1

H0