



WIND POWER



1M0000000

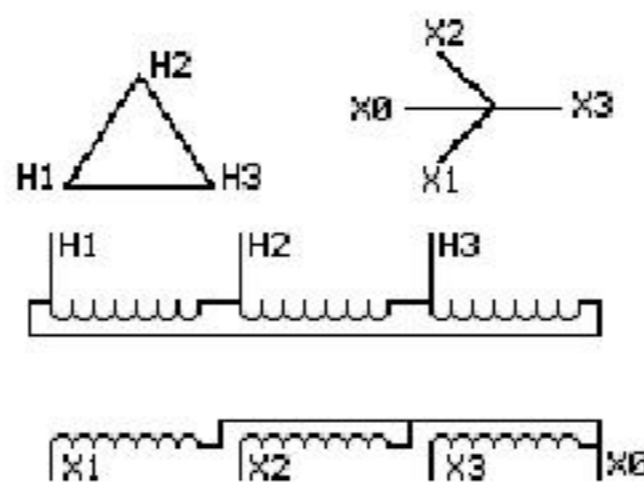
Catalog Number
109W5266P001

TYPE QL
9T83B6022G30

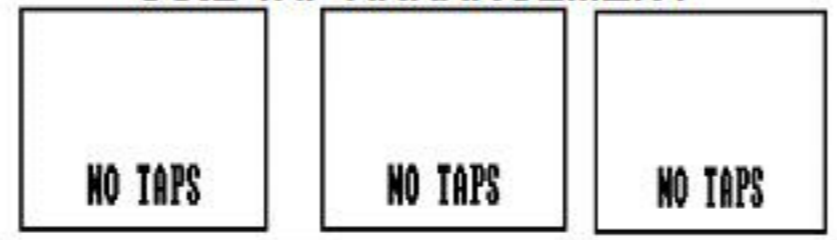
25.0 KVA 60 HZ 3 PH 4.7 % IMP

60 C AMB. 130 C RISE 220 C SYSTEM IS-19C

PRIMARY (H) 690 VOLTS (LINE-LINE)
SECONDARY (X) 400 VOLTS (LINE-LINE)
231 VOLTS (LINE-NEUTRAL)



COIL TAP ARRANGEMENT



JUMPER CONNECTION
TAP VOLTS
H1- 690

INSPECTION & FINAL TEST N612!

NET WGT
408 LB
185.1 Kg
60582
D32AA
NOG
031516



ENCLOSURE TYPE 3R (IP22)

Assembled in Mexico

BEFORE HANDLING, INSTALLING AND OPERATING, SEE INSTRUCTION 475A667AAP001 Outline:303B412AAP025
ALUMINUM CONDUCTOR PRIMARY: 10 KV BIL SECONDARY: 10 KV BIL

IN ACCORDANCE WITH NEC SECTION 450-9, ALLOW AT LEAST SIX INCHES CLEARANCE FOR VENTILATION. CHECK ADDITIONAL NEC AND LOCAL CODES.

Standard



2M0000000



3M0000000