



# Transformer



\*1M0000000\*

Catalog Number Type QL

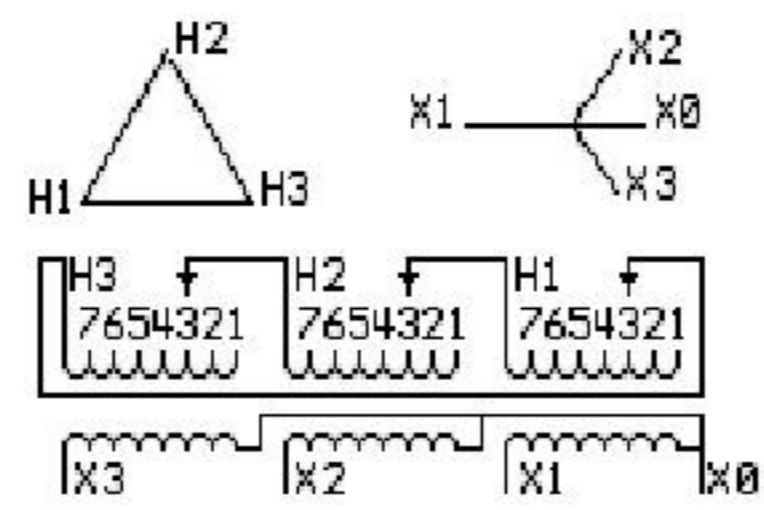
9Q3C112AHBL00A2T00

9T83C6995

112.5 KVA 60 HZ 3 PH 7 % IMP

40 C AMB. 150 C RISE 220 C SYSTEM IS-19C

PRIMARY (H) 575 VOLTS (LINE-LINE)  
SECONDARY (X) 400 VOLTS (LINE-LINE)  
231 VOLTS (LINE-NEUTRAL)

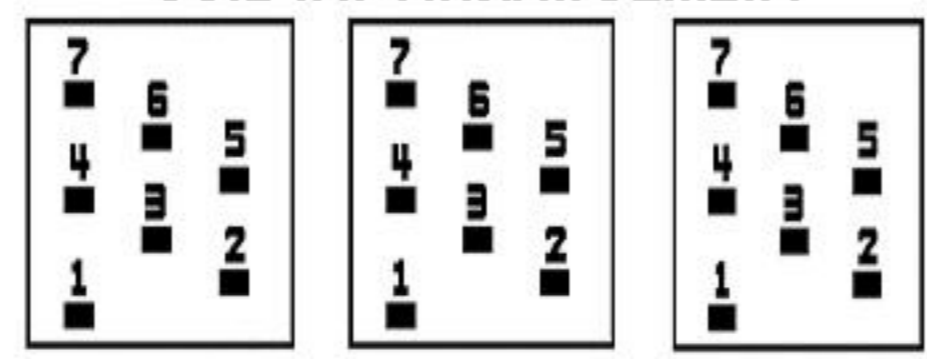


JUMPER CONNECTION	
TAP	VOLTS
1	603
2	589
3	575
4	561
5	547
6	533
7	518

NET WGT  
950 LB  
430.9 Kg  
  
57934  
KV375  
NOG  
101715

INSPECTION  
&  
FINAL TEST  
N542!

### COIL TAP ARRANGEMENT



ENCLOSURE TYPE 2 (IP30). RAINPROOF TYPE 3R ENCLOSURE (IP32) WHEN PROVIDED SHIELD 9T18Y4317G06

Assembled in Mexico

BEFORE HANDLING, INSTALLING AND OPERATING, SEE INSTRUCTION 475A667AAP001 Outline: 303B401AAP075  
COPPER CONDUCTOR PRIMARY: 10 KV BIL SECONDARY: 10 KV BIL

X3 - X2 - X1 - -  
- H3 - H2 - H1

IN ACCORDANCE WITH NEC SECTION 450-9, ALLOW AT LEAST SIX INCHES CLEARANCE FOR VENTILATION. CHECK ADDITIONAL NEC AND LOCAL CODES.

Note: X0 Terminal at the bottom

X1 - H1  
X2 - H2  
X3 - H3

X3 - X2 - X1 - -  
- H3 - H2 - H1

\*2M0000000\*

\*3M0000000\*

X0