



Transformer



1M0000000

X0

X0

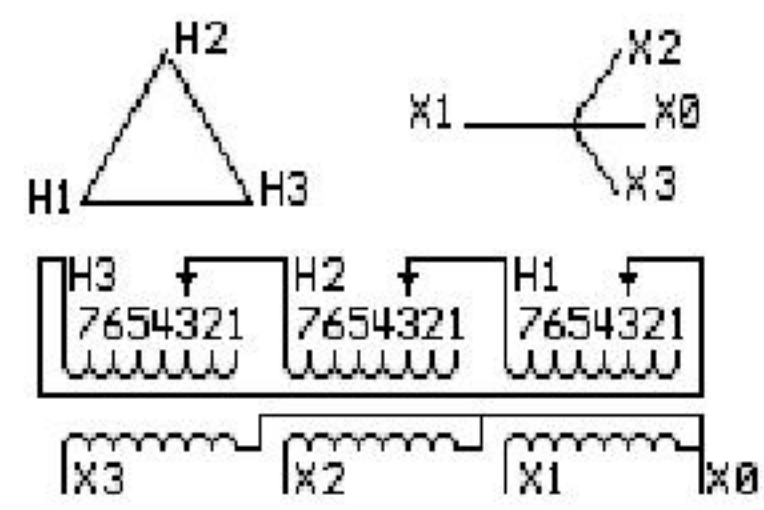
Catalog Number Type QL

9Q3C015AMBL00A2T30

9T83C7181G50

15.0 KVA 60 HZ 3 PH 5.4 % IMP

40 C AMB. 150 C RISE 220 C SYSTEM IS-19C



| JUMPER CONNECTION | |
|-------------------|-------|
| TAP | VOLTS |
| 1 | 420 |
| 2 | 410 |
| 3 | 400 |
| 4 | 389 |
| 5 | 380 |
| 6 | 370 |
| 7 | 360 |

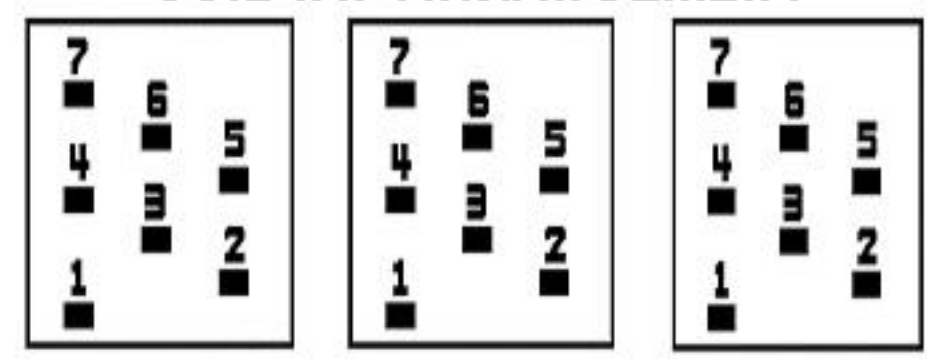
NET WGT
250 LB
113.4 Kg

57319
KV371
NOG
102115

INSPECTION
&
FINAL TEST
N543!

PRIMARY (H) 400 VOLTS (LINE-LINE)
SECONDARY (X) 400 VOLTS (LINE-LINE)
231 VOLTS (LINE-NEUTRAL)

COIL TAP ARRANGEMENT



ENCLOSURE TYPE 2 (IP30). RAINPROOF TYPE 3R ENCLOSURE (IP32) WHEN PROVIDED SHIELD 9T18Y4317G11

Assembled in Mexico

BEFORE HANDLING, INSTALLING AND OPERATING, SEE INSTRUCTION 475A667AAP001
COPPER CONDUCTOR PRIMARY: 10 KV BIL SECONDARY: 10 KV BIL

Outline: 303B401AAP071

X3 - X2 - X1 - X0
- H3 - H2 - H1

IN ACCORDANCE WITH NEC SECTION 450-9, ALLOW AT LEAST SIX INCHES
CLEARANCE FOR VENTILATION. CHECK ADDITIONAL NEC AND LOCAL CODES.

Note: Standard

X3

X1

- H3 - H2 - H1

X3

X1

- H3 - H2 - H1

