



Transformer



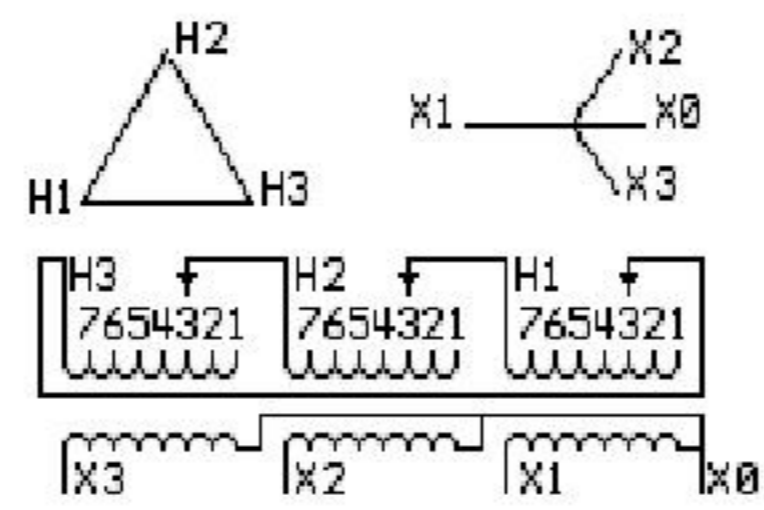
1M0000000

Catalog Number **9Q3C112AMBL00A2T30** Type QL
9T83C7185G50

112.5 KVA 60 HZ 3 PH 7.3 % IMP

40 C AMB. 150 C RISE 220 C SYSTEM IS-19C

PRIMARY (H) 400 VOLTS (LINE-LINE)
SECONDARY (X) 400 VOLTS (LINE-LINE)
231 VOLTS (LINE-NEUTRAL)



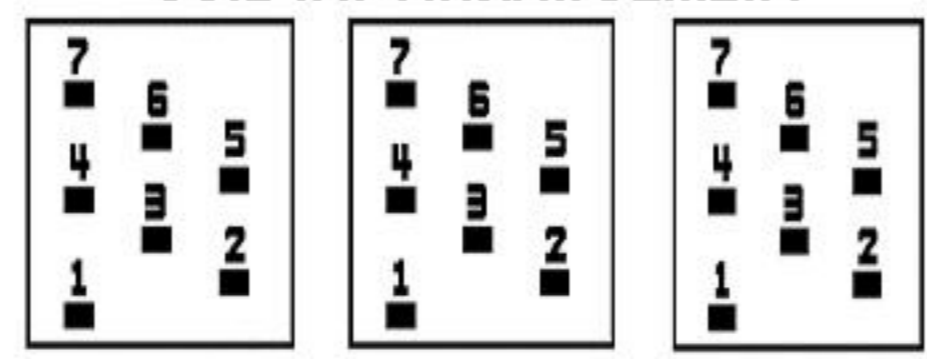
| JUMPER CONNECTION | |
|-------------------|-------|
| TAP | VOLTS |
| 1 | 420 |
| 2 | 411 |
| 3 | 400 |
| 4 | 388 |
| 5 | 379 |
| 6 | 370 |
| 7 | 360 |

NET WGT
950 LB
430.9 Kg

57323
KV375
NOG
102115

INSPECTION
&
FINAL TEST
N543!

COIL TAP ARRANGEMENT



ENCLOSURE TYPE 2 (IP30). RAINPROOF TYPE 3R ENCLOSURE (IP32) WHEN PROVIDED SHIELD 9T18Y4317G06

Assembled in Mexico

BEFORE HANDLING, INSTALLING AND OPERATING, SEE INSTRUCTION 475A667AAP001
COPPER CONDUCTOR PRIMARY: 10 KV BIL SECONDARY: 10 KV BIL

Outline: 303B401AAP075

X3 - X2 - X1 - -
- H3 - H2 - H1

IN ACCORDANCE WITH NEC SECTION 450-9, ALLOW AT LEAST SIX INCHES
CLEARANCE FOR VENTILATION. CHECK ADDITIONAL NEC AND LOCAL CODES.

Note: X0 Terminal at the bottom

X1 - H1
X2 - H2
X3 - H3
X1 - H1
X2 - H2
X3 - H3
X3 - H3
X2 - H2
X1 - H1
2M0000000
3M0000000

X0