



Transformer

Catalog Number 9T83C9396G23

9Q5C150ADAD01R2T30

150.0 KVA 50/60 3 PH 9 % IMP

50 C AMB. 115 C RISE ¹/₂ 220 C SYSTEM IS-19C Type: QL

PRIMARY (X) 380 VOLTS (LINE-LINE)
SECONDARY (H) 480 VOLTS (LINE-LINE)
277 VOLTS (LINE-NEUTRAL)

ELECTROSTATIC GROUND SHIELD IN EACH PHASE

ENCLOSURE TYPE 2 (IP30). RAINPROOF TYPE 3R ENCLOSURE (IP32) WHEN PROVIDED SHIELD 9T18Y4322G 88

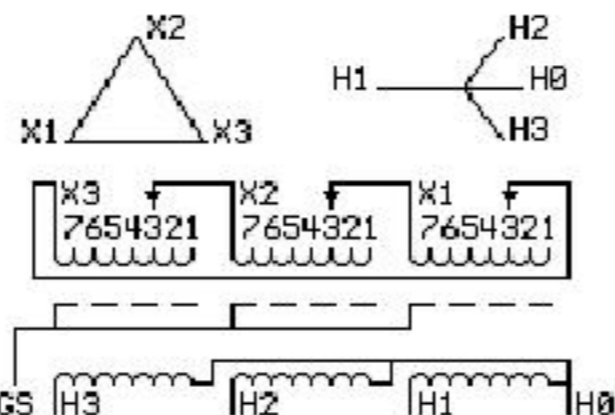
BEFORE HANDLING, INSTALLING AND OPERATING, SEE INSTRUCTION 475A667AAP001
COPPER CONDUCTOR PRIMARY: 10 KV BIL SECONDARY: 10 KV BIL

IN ACCORDANCE WITH NEC SECTION 450-9, ALLOW AT LEAST SIX INCHES
CLEARANCE FOR VENTILATION. CHECK ADDITIONAL NEC AND LOCAL CODES.

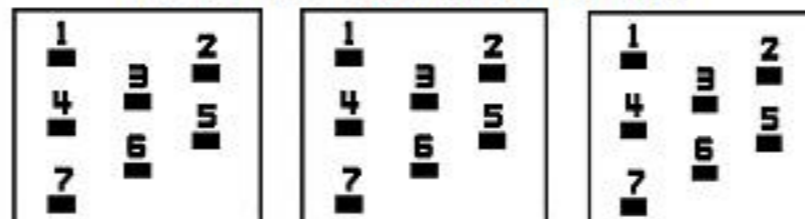
GE Energy Industrial Solutions

NEMA CLASS AA DRY TYPE TRANSFORMER

Meets TP-1 2002 efficiency



COIL TAP ARRANGEMENT



JUMPER CONNECTION	
TAP	VOLTS
1	398
2	390
3	380
4	370
5	361
6	353
7	341

NET WGT 1700 LB 771.1 Kg

090815 N537! XV377

57010 NOG



LISTED 769G

Outline: 3038919AAP077

Assembled in Mexico

INSPECTION & FINAL TEST

N537!

