



Transformer

Catalog Number 9T83C9747G03

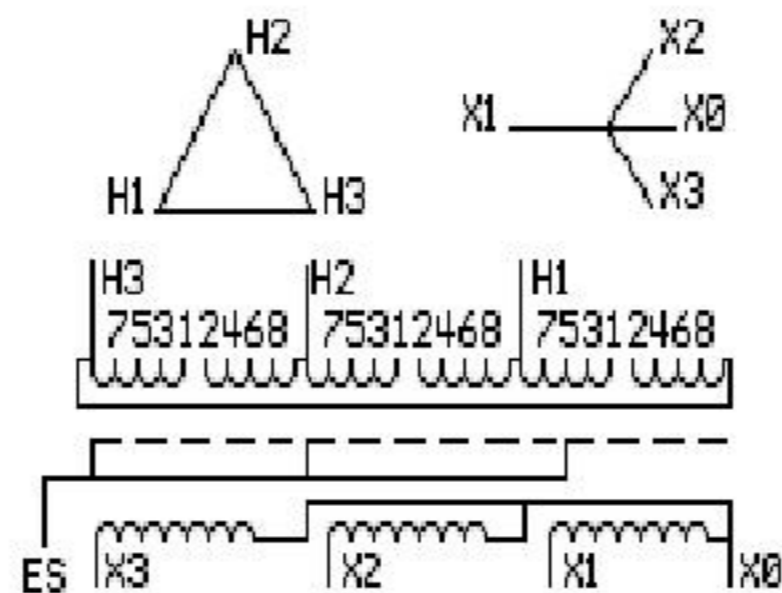
9Q3C225AABQ01A2T00

225.0 KVA 60 HZ 3 PH 6.8 % IMP

40 C AMB. 150 C RISE 220 C SYSTEM IS-19C Type: QL

PRIMARY (H) 480 VOLTS (LINE-LINE)
SECONDARY (X) 440 VOLTS (LINE-LINE)
254 VOLTS (LINE-NEUTRAL)

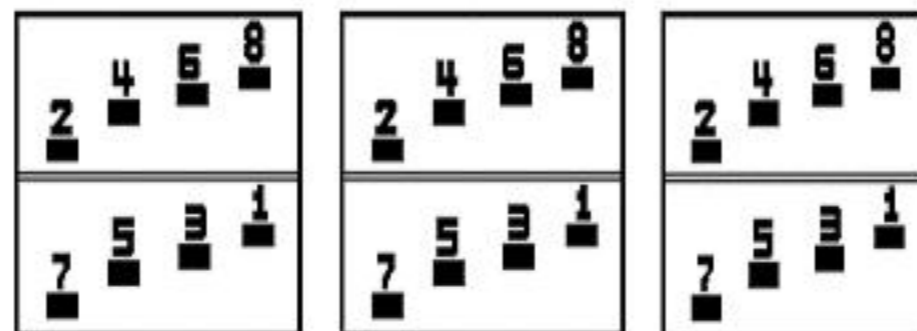
ELECTROSTATIC GROUND SHIELD IN EACH PHASE



JUMPER CONNECTION

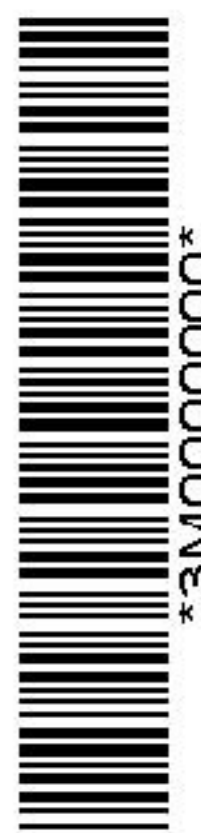
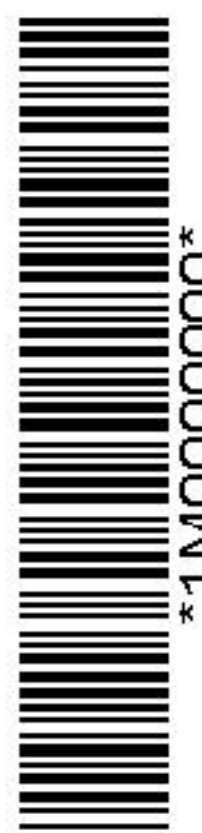
TAP	VOLTS
1-2	502
2-3	490
3-4	480
4-5	466
5-6	454
6-7	442
7-8	429

COIL TAP ARRANGEMENT



NET WGT 1700 LB 771.1 Kg

092815 N540! XV377
57886 NOG



ENCLOSURE TYPE 2 (IP30). RAINPROOF TYPE 3R ENCLOSURE (IP32) WHEN PROVIDED SHIELD 9T18Y4322G88

BEFORE HANDLING, INSTALLING AND OPERATING, SEE INSTRUCTION 475A667AAP001
COPPER CONDUCTOR PRIMARY: 10 KV BIL SECONDARY: 10 KV BIL

IN ACCORDANCE WITH NEC SECTION 450-9, ALLOW AT LEAST SIX INCHES CLEARANCE FOR VENTILATION. CHECK ADDITIONAL NEC AND LOCAL CODES.



Outline: 303B919AAP077
Assembled in Mexico

INSPECTION & FINAL TEST
N540!