



Transformer

Catalog Number

9T83C9809G03

500.0 KVA 60 HZ 3 PH 4.4 % IMP

40 C AMB. 150 C RISE 220 C SYSTEM IS-19C Type: QL

PRIMARY (X)	208 VOLTS (LINE-LINE)
SECONDARY (H)	480 VOLTS (LINE-LINE)
	277 VOLTS (LINE-NEUTRAL)

ELECTROSTATIC GROUND SHIELD IN EACH PHASE

ENCLOSURE TYPE 2 (IP30). RAINPROOF TYPE 3R ENCLOSURE (IP32) WHEN PROVIDED SHIELD 9T18Y4322G68

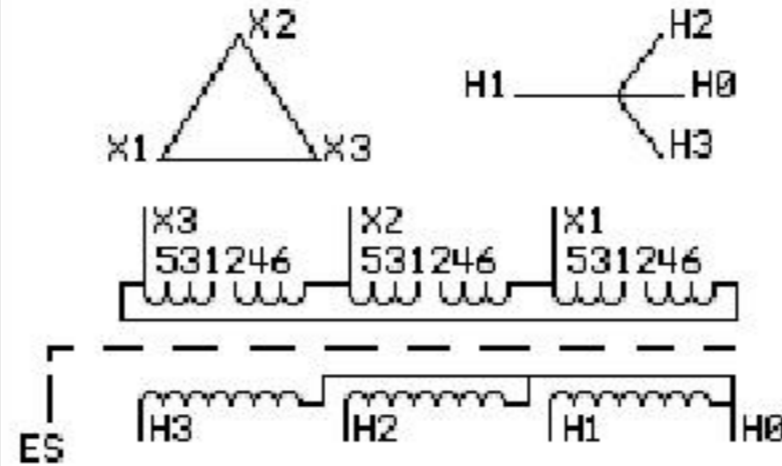
BEFORE HANDLING, INSTALLING AND OPERATING, SEE INSTRUCTION 475A667AAP001
COPPER CONDUCTOR PRIMARY: 10 KV BIL SECONDARY: 10 KV BIL

IN ACCORDANCE WITH NEC SECTION 450-9, ALLOW AT LEAST SIX INCHES CLEARANCE FOR VENTILATION. CHECK ADDITIONAL NEC AND LOCAL CODES.

GE Energy Industrial Solutions

NEMA CLASS AA DRY TYPE TRANSFORMER

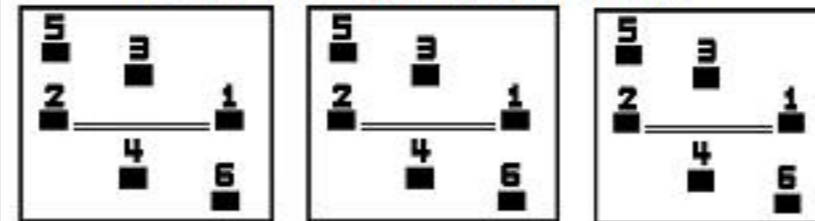
Meets TP-1 2002 efficiency



JUMPER CONNECTION

TAP	VOLTS
1-2	228
2-3	218
3-4	208
4-5	198
5-6	188

COIL TAP ARRANGEMENT



NET WGT 4050 LB 1837.1 Kg

090115	N536!	YF379
	56814	NOG



LISTED 769G

Outline: 3038919AAP179
Assembled in Mexico

INSPECTION & FINAL TEST
N536!

