



WIND POWER



1M000000

X0

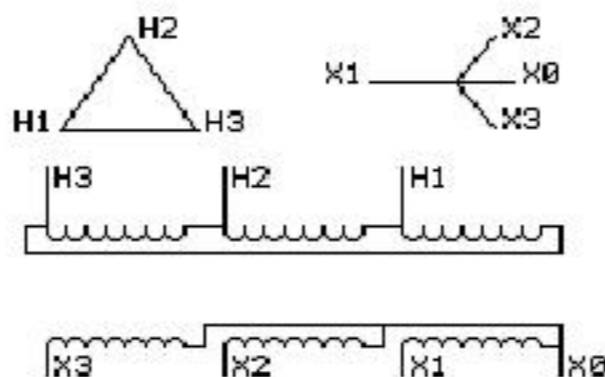
X0

Catalog Number
9T85B5903G04

Type **QL-TE**

45.0 KVA 50/60 HZ 3 PH 3.3 % IMP

40 C AMB. 150 C RISE 220 C SYSTEM IS-19C



JUMPER
CONNECTION
TAP VOLTS
H1- 690

NET WGT
650 LB
294.8 Kg

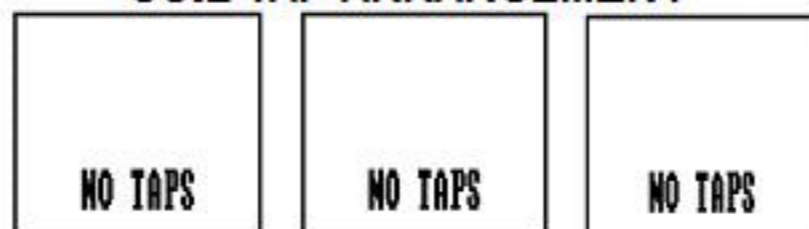
55499
W33AA

NOG
072715

INSPECTION
&
FINAL TEST
N531!

PRIMARY (H) 690 VOLTS (LINE-LINE)
SECONDARY (X) 400 VOLTS (LINE-LINE)
231 VOLTS (LINE-NEUTRAL)

COIL TAP ARRANGEMENT



X3

X3

ENCLOSURE TYPE 3R (IP22)

Assembled in Mexico

BEFORE HANDLING, INSTALLING AND OPERATING, SEE INSTRUCTION 475A667AAP001
ALUMINUM CONDUCTOR PRIMARY: 10 KV BIL SECONDARY: 10 KV BIL

Outline: 303B414AAP045

X3 - X2 - X1 - X0
- H3 - H2 - H1

IN ACCORDANCE WITH NEC SECTION 450-9, ALLOW AT LEAST SIX INCHES
CLEARANCE FOR VENTILATION. CHECK ADDITIONAL NEC AND LOCAL CODES.

Note: Standard



2M000000



3M000000