



WIND POWER



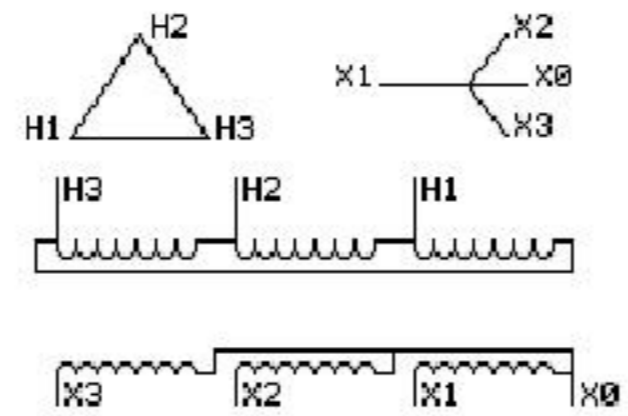
1M000000

Catalog Number
108W4115P002

TYPE QL-TE
9T85B5903G07

45.0 KVA 60 HZ 3 PH 3.3 % IMP

60 C AMB. 130 C RISE 220 C SYSTEM IS-19C



JUMPER CONNECTION
TAP VOLTS
H1- 690

INSPECTION & FINAL TEST N531!

NET WGT
650 LB
294.8 Kg

55498
W33AA
NOG
072715

PRIMARY (H) 690 VOLTS (LINE-LINE)
SECONDARY (X) 400 VOLTS (LINE-LINE)
231 VOLTS (LINE-NEUTRAL)

COIL TAP ARRANGEMENT



ENCLOSURE TYPE 3R (IP32)

Assembled in Mexico

BEFORE HANDLING, INSTALLING AND OPERATING, SEE INSTRUCTION 475A667AAP001 Outline: 303B414AAP045
ALUMINUM CONDUCTOR PRIMARY: 10 KV BIL SECONDARY: 10 KV BIL

IN ACCORDANCE WITH NEC SECTION 450-9, ALLOW AT LEAST SIX INCHES CLEARANCE FOR VENTILATION. CHECK ADDITIONAL NEC AND LOCAL CODES.

Standard

