

Document control	Revision

Reference	Revision
CLMD5X-6X-8X	-

This document must not be copied without our written permission, and the contents here of must not be imparted to a third party nor any unauthorized purpose. Contravention will be prosecuted. ABB

CAPACITOR TYPE CLMD's "5X-6X-8X"

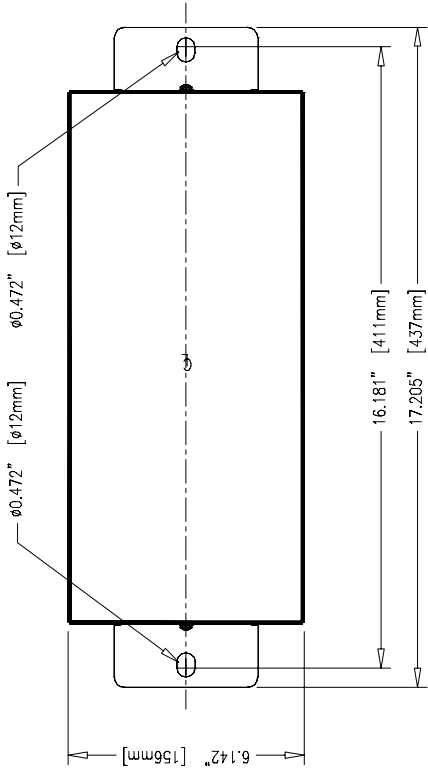
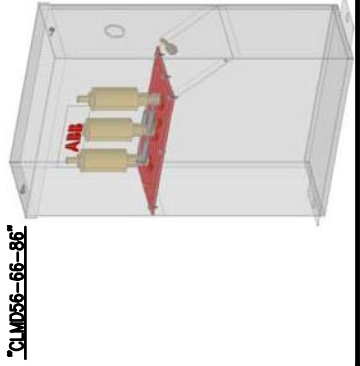
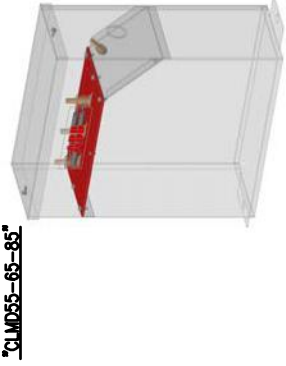
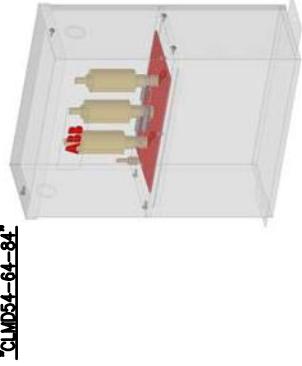
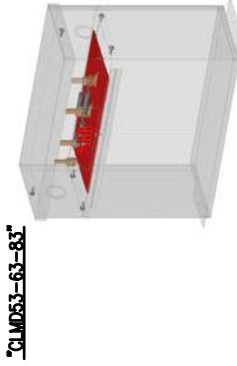
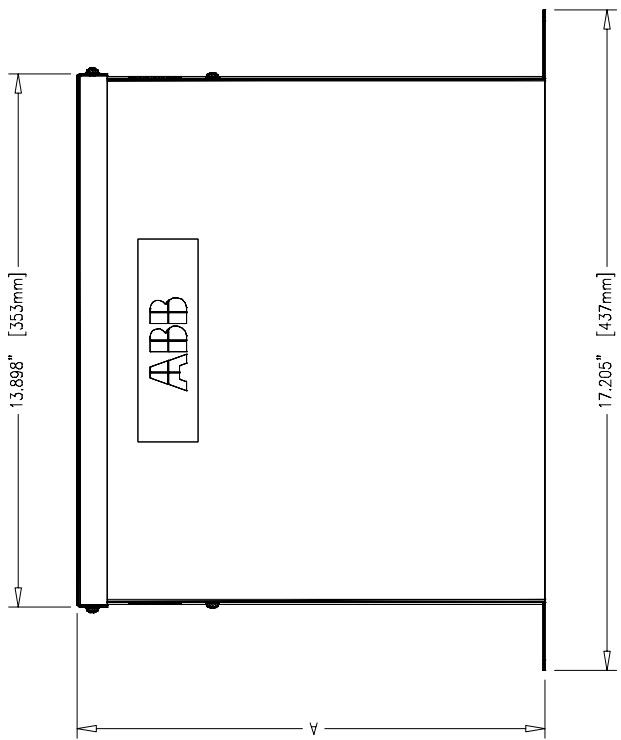
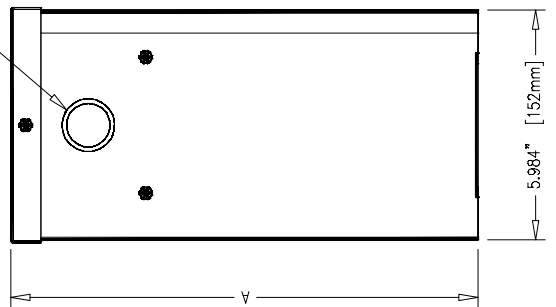


TABLE #1

Enclosure	Dimension "A"	Type
CLMD53	12.18" [309.52mm]	Type 1-12 Standard
CLMD63	19.07" [484.52mm]	
CLMD83	26.35" [669.52mm]	
CLMD54	17.18" [436.52mm]	Type 1-12 with Fuses
CLMD64	24.07" [611.52mm]	
CLMD84	31.35" [796.52mm]	Type 3R Standard
CLMD55	15.80" [401.52mm]	
CLMD65	22.82" [575.52mm]	
CLMD85	29.97" [761.52mm]	Type 3R with Fuses
CLMD56	20.08" [528.52mm]	
CLMD66	27.69" [703.52mm]	
CLMD86	34.97" [888.52mm]	



2 x DOUBLE KNOCK-OUT
1-1/8" (29mm) DIA.
AND
1-3/8" (35mm) DIA.



No.	Revision	Appd.	Year	Week	Description	
					CAPACITOR UNIT TYPE "CLMD5X-6X-8X" TYPE 1-12-3R NON-FUSIBLE AND FUSIBLE	
Design checked by		Drawing checked by		Drawing Type		
A. MORIN		A. MORIN		MECHANICAL DRAWING		
Drawn by		Dept.		ASSEMBLY		
A. MORIN		EN		ABB Inc.		
		Year		Contract No.		
		10		CLMD5X-6X-8X		
		15		Drawing No.		
				Sheet		
				1		
				Cont.		
				-		