

**ABB Inc.**  
601 Shiloh Road  
Plano, TX 75074  
USA  
+1 877 546 3243  
[www.gecriticalpower.com](http://www.gecriticalpower.com)



# End-to-end embedded power

Product matrix

# AC-DC and DC-DC power supplies

I <sub>OUT</sub> \ V <sub>OUT</sub>	380 V	65 V	58 V	54 V	53 V	52 V	48 V	32 V	28 V	24 V	23 V	18 V	12 V	5 V
250 A													CAR3012TE	
208 A													CAR2512TE	
													CAR2512DC	
166 A													CAR2012TE	
150 A													CAR1812FP	
133 A													CAR1612FP	
100 A													CAR1212FP	
													CAR1212DC	
83.3 A														
70.8 A													CAR0812FP	
													CAR0812DC	
65 A														
62.5 A													SLP0712TE	
60 A													MPR0712TE	
55 A														
52 A													CAR2548FP	
													CAR2548TN	
													CAR2548DC	
50 A														
45 A														
41.6 A													CLP0512FP	
													CAR0512FP	
													CCR0512FP	
40 A														
37.5 A													CLP0412FP	
33 A														
31.25 A														
30 A														
25 A														

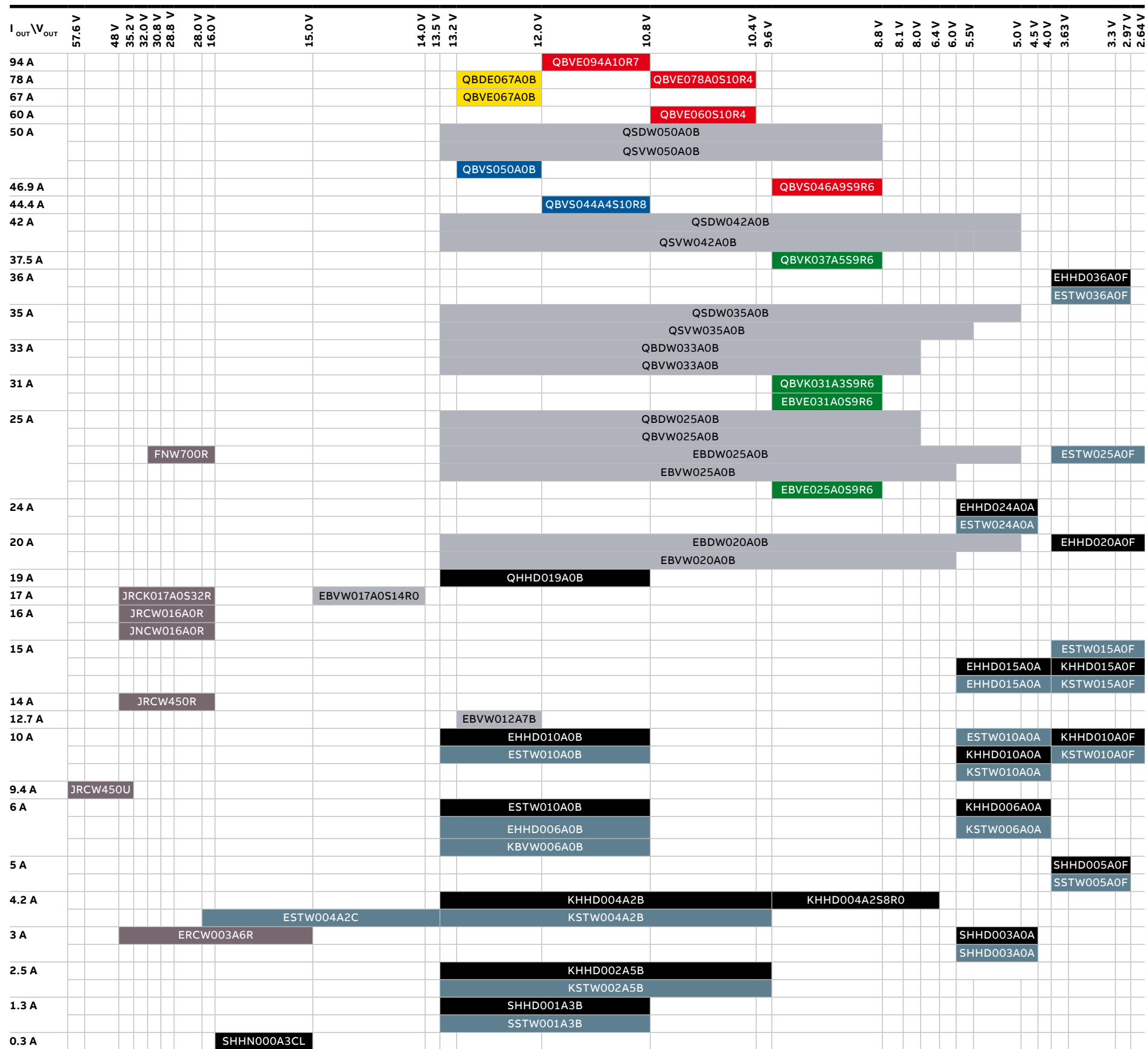
I <sub>OUT</sub> \ V <sub>OUT</sub>	380 V	65 V	58 V	54 V	53 V	52 V	48 V	32 V	28 V	24 V	18 V	12 V	5 V
20 A													
18.75 A													
16.6 A													
12.5 A													
10 A													
9.4 A													

\* 48 V or 54 V default V<sub>out</sub> available

<b>EP Rectifier (AC in)</b>	<b>CLP (Open Frame, AC in)</b>	<b>CCR (1/2 U)</b>
<b>CP Rectifier (AC in)</b>	<b>CP Converter (DC in)</b>	<b>GP Rectifier (AC in)</b>
<b>CAR Rectifier (AC in)</b>	<b>CAR Converter (DC in)</b>	<b>SLP (1Ux1U)</b>
<b>CP Short Rectifier (AC or HVDC in)</b>	<b>CC Rectifier (AC in)</b>	<b>CH Rectifier (AC in)</b>

[www.geindustrial.com/products/embedded-power/ac-dc-power-supplies](http://www.geindustrial.com/products/embedded-power/ac-dc-power-supplies)

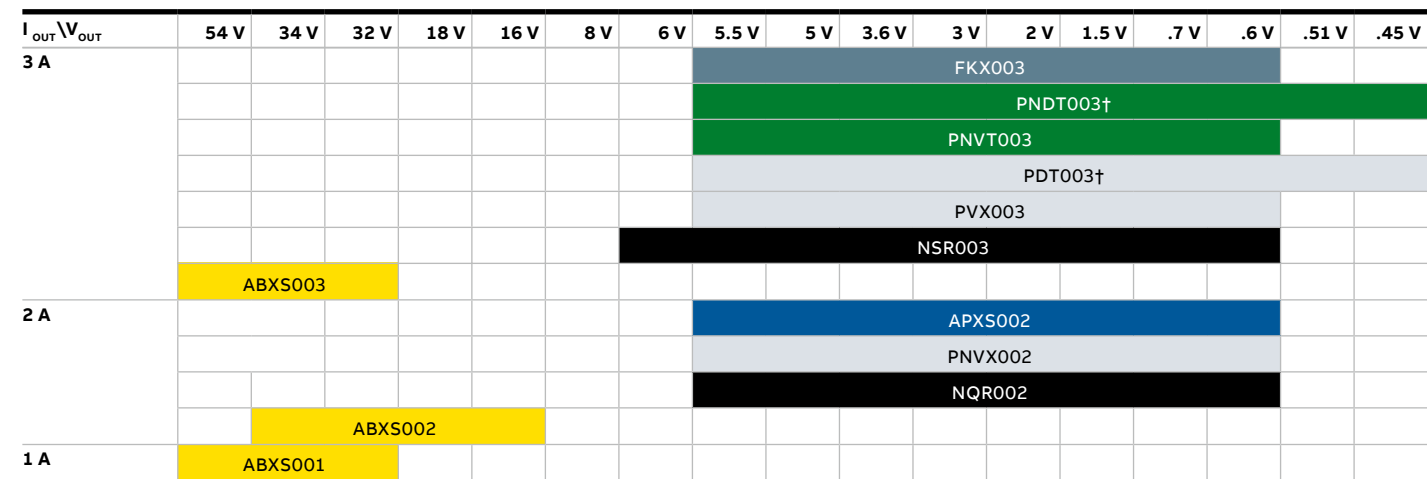
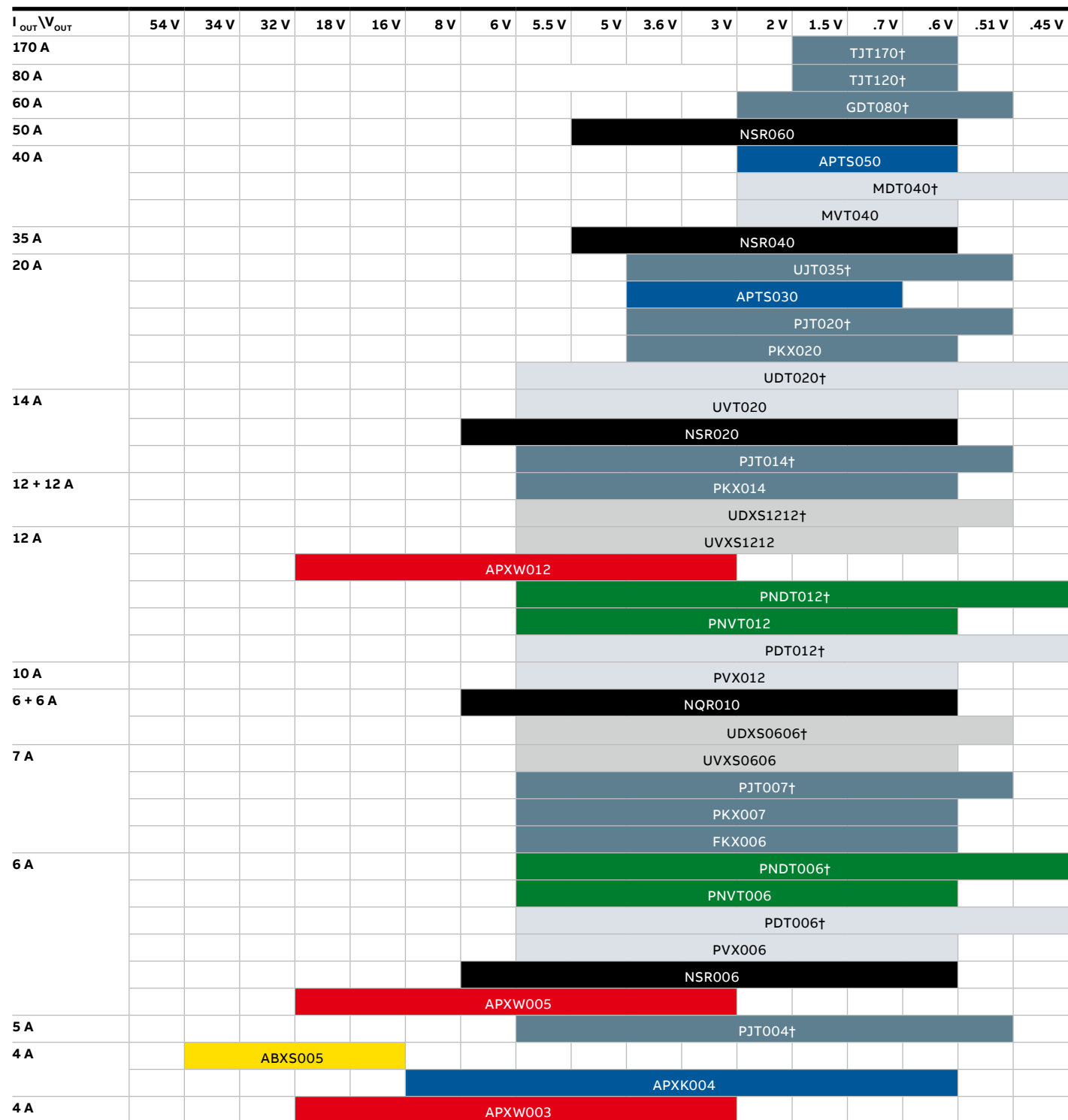
# Isolated DC-DC converters



First Letter	Package	Third Letter	Comm Interface
S	1x1 brick	D	DOSA PMBus
K	1/16th brick	V and all others	DOSA Analog
E	1/8th brick		
Q	1/4 brick		
N	1/2 brick		
F	full brick		

ProLynx* (9-36Vin)	BARRACUDA* HIGH (Vin = other)
BARRACUDA* HIGH (Vin = 38-55 V)	HAMMERHEAD* (18-75 Vin)
BARRACUDA* HIGH (Vin = 40-60 V)	BARRACUDA* LOW (36-75 Vin)
BARRACUDA* HIGH (Vin = 36-75 V)	ORCA* (36-75 Vin)

# Non-isolated DC-DC converters



First Letter	Package
F	Femto (6.8 x 9 mm)
P	Pico (12 x 12 mm)
U	Micro (20 x 11 mm)
M	Mega (33x13 mm)
G	Giga (33 x 23 mm)
T	Tera (54 x 32 mm)
A	Varies
N	SIP, varies

† PMBus Digital

<b>ProLynx* (9-36 Vin)</b>	<b>TLynx* (Vin varies)</b>
<b>SlimLynx* (3-14.4 Vin)</b>	<b>Naos Raptor* (SIP, Vin varies)</b>
<b>DLynx* (3-14.4 Vin)</b>	<b>Dual DLynx* (4.5-14.4 Vin)</b>
<b>DLynx II*</b>	<b>BoostLynx* (8-16 Vin)</b>

[www.geindustrial.com/products/embedded-power/non-isolated-dcdc-converters](http://www.geindustrial.com/products/embedded-power/non-isolated-dcdc-converters)