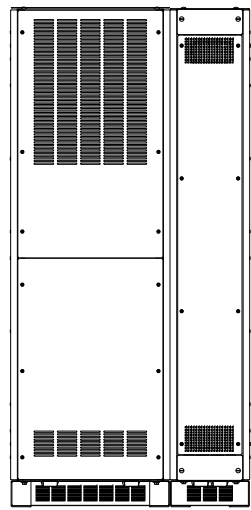
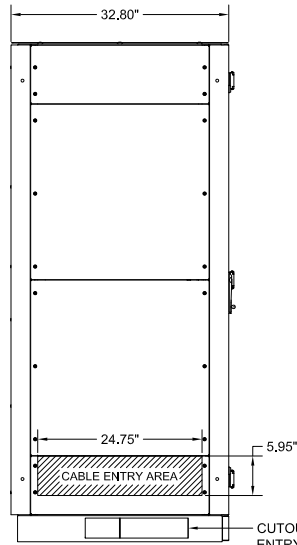


TOP VIEW

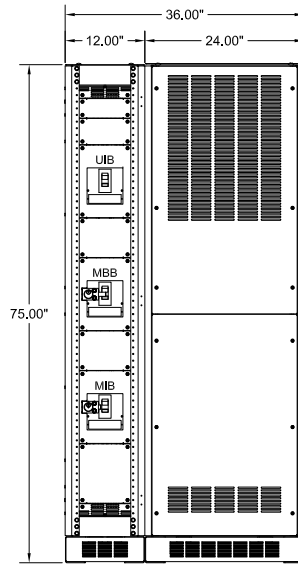


REAR VIEW

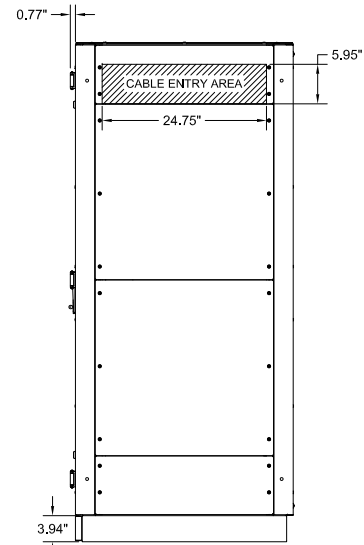


LEFT SIDE VIEW

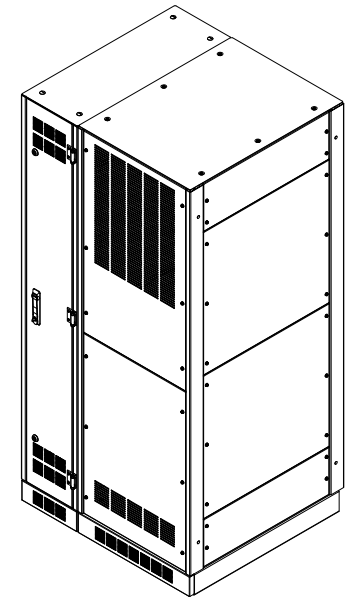
CUTOUT FOR CABLE ENTRY INTO TLE SERIES UPS



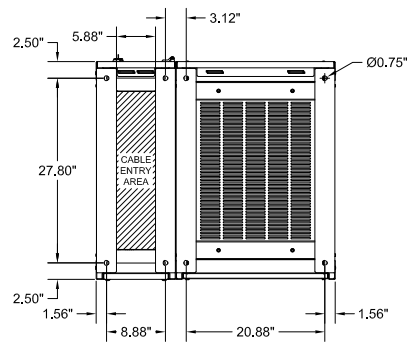
FRONT VIEW (DOOR REMOVED)



RIGHT SIDE VIEW




ISOMETRIC VIEW



BOTTOM VIEW

NOTES:

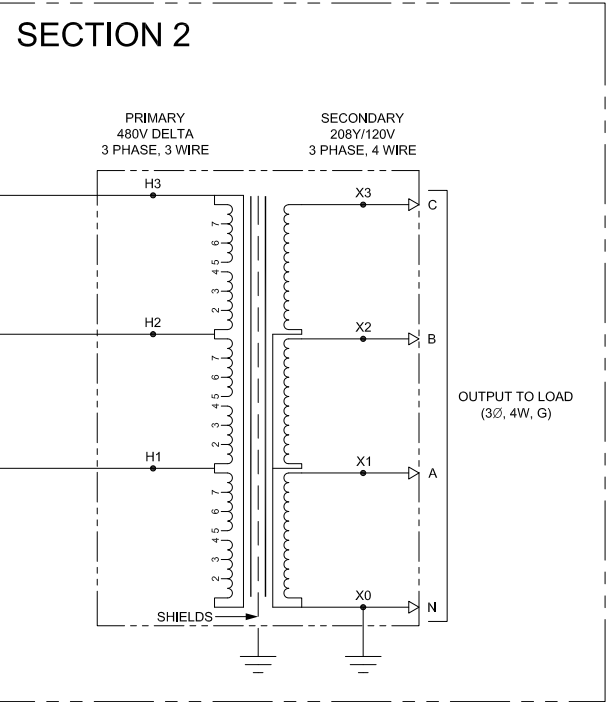
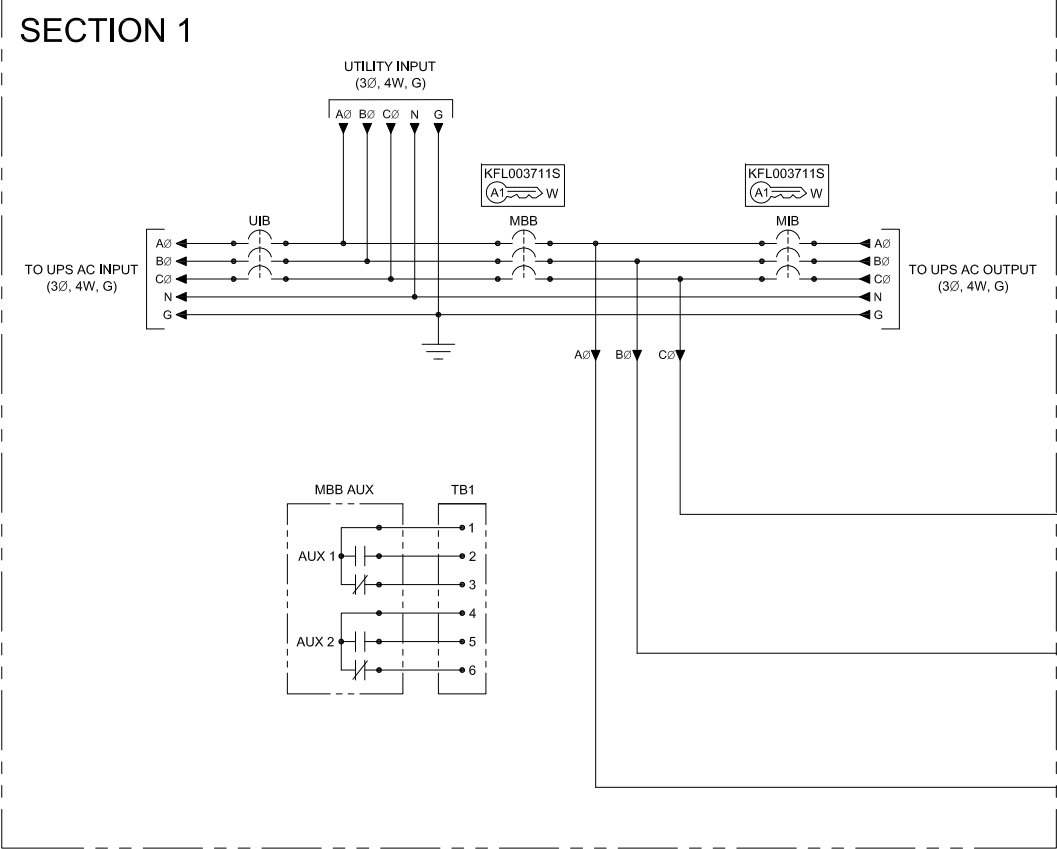
- APPROXIMATE WEIGHT:
120KVA 1500 LBS.
160KVA 1700 LBS.
- ASSEMBLY IS UL/CUL LISTED TO UL 891 AND C22.2 NO. 244.
- NEMA 1 TYPE ENCLOSURE.
- THE CABINETS ARE CONSTRUCTED FROM GALVANIZED STEEL.
- THE CABINETS ARE TO BE MOUNTED THROUGH THE 0.750" HOLES IN THE CABINET LEGS. THE LEGS ARE FORMED FROM 10 GAUGE STEEL.
- FINISH IS POWDER COAT ON ALL EXTERNAL AND VISIBLE SURFACES, INTERIOR PANELS AND MOUNT BRACKETS ARE GALVANIZED FINISH.
- A MINIMUM REAR CLEARANCE OF 6" IS REQUIRED FOR OPTIMAL COOLING OF THE EQUIPMENT.

MAINTENANCE BYPASS CABINET WITH XFRMR FOR TLE SERIES UPS				
120KVA-160KVA 3 BREAKER BYPASS				
480D-208Y/120V OUTPUT TRANSFORMER				
THE INFORMATION CONTAINED IN THIS DRAWING IS THE SOLE PROPERTY OF C&C POWER, INC. ANY REPRODUCTION WITHOUT THE WRITTEN CONSENT OF C&C POWER, INC IS PROHIBITED.		 Electrification Product Group EP Industrial Solutions Division Manufactured by C&C Power for ABB		
DIMENSIONS ARE IN INCHES	INITIALS			DATE
TOLERANCES:	DRAWN			TD
DECIMALS: .XX ±.13	ANGLES: ±1°	CHECKED	CH	9/5/2019
SCALE: NTS	SIZE: A	REV: 2	SHEET 1 OF 2	
©2017 C&C POWER, INC. ALL RIGHTS RESERVED				

DRAWING # 99339-F-120KVA-160KVA-480D-208Y-C2-SD01-1 REV 2

TRANSFORMER RATINGS											
UPS KVA	XFRMR KVA	PRIMARY VOLTAGE	SECONDARY VOLTAGE	FREQUENCY	MATERIAL	TEMP RISE	K FACTOR	EFFICIENCY	NEUTRAL	OUTPUT TO LOAD	
120	120	480	208Y/120	60 HZ	CU	150°C	K13	DOE-2016	200% RATED ACCEPTS (4) 6 - 350	(2) 6 - 350 PER PHASE	
150	160									200% RATED ACCEPTS (4) 4 - 600	(2) 4 - 600 PER PHASE
160											

CIRCUIT BREAKER SUMMARY					
UPS KVA	AIC	BREAKER MODEL	LOCATION	TRIP	WIRE RANGE
120	35K @ 480VAC	SFHA36AT0250	UIB	250A	(1) 8 - 350
			MBB & MIB	200A	
	65K @ 480VAC	SFLA36AT0250	UIB	250A	
			MBB & MIB	200A	
150 & 160	35K @ 480VAC	SGHA36AT0400	UIB	300A	(2) 2/0 - 500 OR (1) 8 - 600
			MBB & MIB	250A	
	65K @ 480VAC	SGLA36AT0400	UIB	300A	
			MBB & MIB	250A	



- NOTES:
- "UIB" UPS INPUT BREAKER
 - "MBB" MAINTENANCE BYPASS BREAKER
 - "MIB" MAINTENANCE ISOLATION BREAKER
 - ALL INTERNAL ELECTRICAL CONNECTIONS BETWEEN "UIB", "MBB" AND "MIB" ARE MADE USING COPPER BUS BARS.
 - GROUND LUG ACCEPTS (4) #6 - 250 MCM CABLES.
 - UTILITY INPUT NEUTRAL BUS IS 600A RATED AND PROVIDED WITH MECHANICAL LUGS THAT ACCEPT A TOTAL OF (4) #6 - 350 MCM CABLES.
 - MECHANICAL LUGS USED FOR THE CONNECTIONS TO UPS AC INPUT AND UPS AC OUTPUT. CABLE KIT SIZED FOR SIDE BY SIDE LINE UP WITH UPS.
 - "UIB" CIRCUIT BREAKERS.
 - MECHANICAL LUGS ARE PROVIDED FOR THE OUTPUT TO LOAD AND X0 NEUTRAL CONNECTIONS. SEE TRANSFORMER RATINGS TABLE FOR WIRE RANGE INFO.
 - CABLE KIT PROVIDED FOR CONNECTIONS TO UPS AC INPUT AND UPS AC OUTPUT. CABLE KIT SIZED FOR SIDE BY SIDE LINE UP WITH UPS.
 - THIS DRAWING IS TO BE USED FOR ELECTRICAL PURPOSES ONLY AND DOES NOT REPRESENT THE ACTUAL MECHANICAL LAYOUT OF THE EQUIPMENT.

- KIRK KEY NOTES:
- THE "E" OR "W" NEXT TO THE INTERLOCK INDICATES THE POSITION OF THE INTERLOCK BOLT WHEN THE KEY IS REMOVABLE. "E" = EXTENDED AND "W" = WITHDRAWN.
 - THE KEY OR KEYS NEXT TO THE INTERLOCK INDICATES THE KEY NUMBER THAT FUNCTIONS WITH THE INTERLOCK.

MAINTENANCE BYPASS CABINET WITH XFRMR FOR TLE SERIES UPS
120KVA-160KVA 3 BREAKER BYPASS
480D-208Y/120V OUTPUT TRANSFORMER

THE INFORMATION CONTAINED IN THIS DRAWING IS THE SOLE PROPERTY OF C&C POWER, INC. ANY REPRODUCTION WITHOUT THE WRITTEN CONSENT OF C&C POWER, INC IS PROHIBITED.

DIMENSIONS ARE IN INCHES	INITIALS	DATE
TOLERANCES:	DRAWN TD	8/23/2019
DECIMALS: .XX ±.13	CHECKED CH	9/5/2019
ANGLES: ±1°		
XXX ±.082		

SCALE: SIZE: A REV: 2 SHEET 2 OF 2

ABB
 Electrification's Product Group
 EP Industrial Solutions Division
 Manufactured by C&C Power for ABB

© 2017 C&C POWER, INC. ALL RIGHTS RESERVED

DRAWING #: 9839-F-120KVA-160KVA-480D-208Y-120V-C2-SD01-2 REV 2